


CONFIDENTIAL AND PROPRIETARY
 REPRODUCTIONS OF THIS DRAWING ARE FOR INTERNAL DISTRIBUTION ONLY.

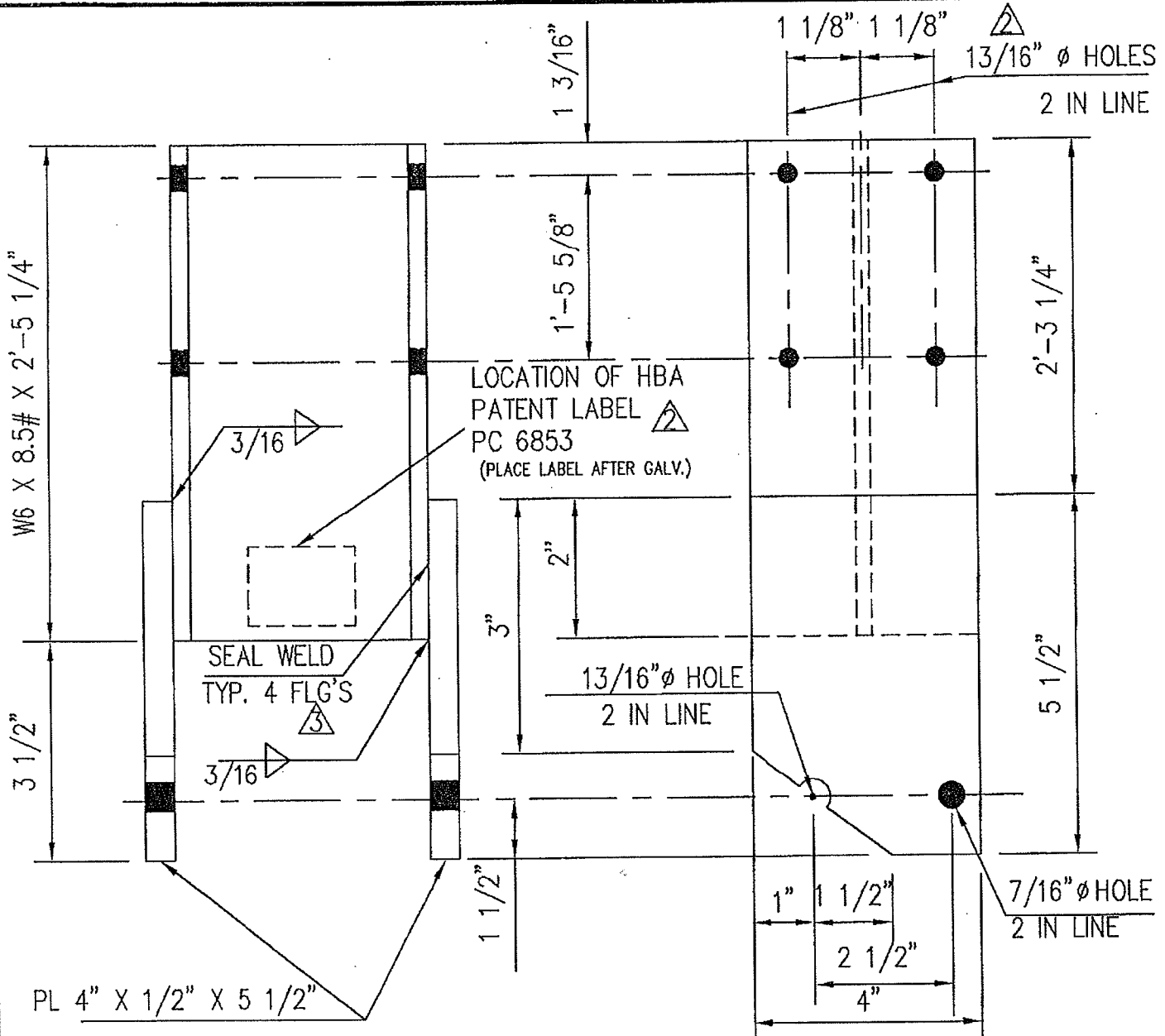
COPYRIGHT © 1999 TRINITY INDUSTRIES INC

STATE: ET-2000

APPROX. SHPG. WT.; 59 #

| | | | |
|--|------------|---------------|----------------|
| ITEM CLASS: | | | |
| MATERIAL: A-36 | | FINISH A-123 | |
|  TRINITY INDUSTRIES, INC. HIGHWAY SAFETY PRODUCTS 2525 STEMMONS FREEWAY, DALLAS, TX 75207 | | | |
| This drawing and the information shown thereon is the sole property of TRINITY INDUSTRIES, INC. Neither the drawing nor such information is to be used for any purpose other than that for which it was specifically furnished by TRINITY INDUSTRIES, INC., nor is any reproduction authorized without written permission. | | | |
| BREAKAWAY POST BOTTOM # 1 x 6' - 1 1/2" LG | | | |
| DRAWN: C.C. | CHKD: B.T. | SCALE: N.T.S. | DATE: 11/12/99 |
| DRAWING NO: 33873 | | | REV. 2 |

| MK | BY | DATE | REVISION |
|----|----|---------|------------------|
| 2 | LH | 5-14-02 | ADDED SEAL WELDS |
| 1 | DD | 7-13-00 | ADDED STICKER |



CONFIDENTIAL AND PROPRIETARY
REPRODUCTIONS OF THIS DRAWING ARE FOR INTERNAL DISTRIBUTION ONLY.

COPYRIGHT © 1999 TRINITY INDUSTRIES INC

STATE: ET-2000

APPROX. SHPG. WT.; 28 #

ITEM CLASS:

MATERIAL: A-36

FINISH A-123



TRINITY INDUSTRIES, INC.

HIGHWAY SAFETY PRODUCTS
2525 STEMMONS FREEWAY, DALLAS, TX 75207

This drawing and the information shown thereon is the sole property of TRINITY INDUSTRIES, INC. Neither the drawing nor such information is to be used for any purpose other than that for which it was specifically furnished by TRINITY INDUSTRIES, INC., nor is any reproduction authorized without written permission.

BREAKAWAY POST TOP # 1
x 2'-8 3/4"

DRAWN: C.C.

CHKD: B.T.

SCALE: N.T.S.

DATE: 11/12/99

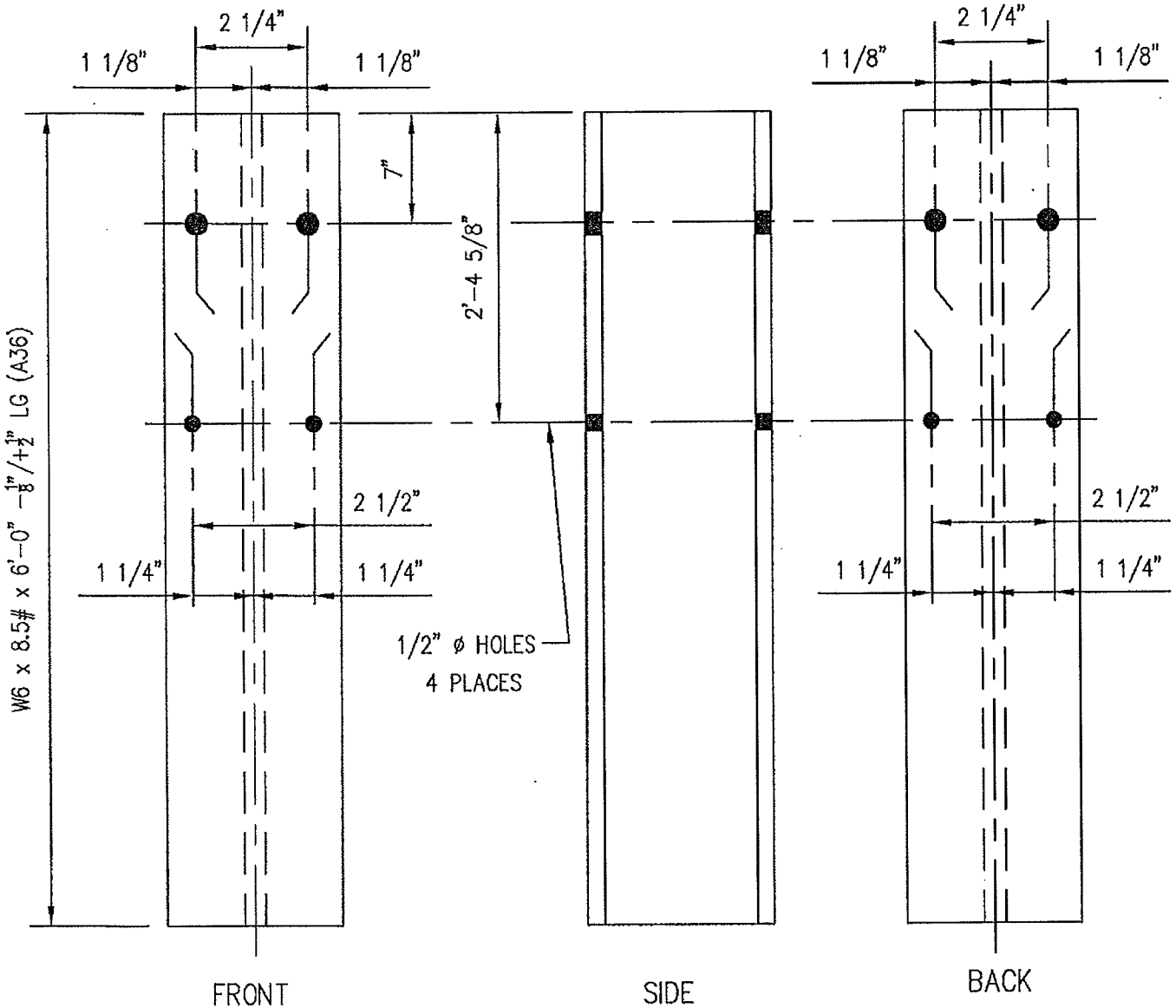
DRAWING NO:

33871

REV.

3

| MK | BY | DATE | REVISION |
|----|----|---------|-------------------------------------|
| 3 | LH | 5-14-02 | ADDED SEAL WELDS |
| 2 | DD | 7-13-00 | CHG SLOTS TO HOLES ADDED STICKER |
| 1 | BT | 3-24-00 | ADDED SLOTS |




W6 x 8.5# x 6'-0" -1/8" / +1/2" LG (A36)

ALL HOLES 13/16" ϕ DIA. U.N.

CONFIDENTIAL AND PROPRIETARY
 REPRODUCTIONS OF THIS DRAWING ARE FOR INTERNAL
 DISTRIBUTION ONLY.
 ©COPYRIGHT 2003 TRINITY INDUSTRIES INC

ET PLUS
 APPROX. SHPG. WT.; 54 #

| MK | BY | DATE | REVISION |
|----|-----|---------|---------------------------|
| 1 | SAR | 3/15/05 | ADDED TOLERANCE TO LENGTH |

| | | | |
|--|----------|---------------|----------------|
| ITEM CLASS: | | | |
| MATERIAL: A-36 | | FINISH A-123 | |
|  TRINITY INDUSTRIES, INC. HIGHWAY SAFETY PRODUCTS 2525 STEMMONS FREEWAY, DALLAS, TX 75207 | | | |
| This drawing and the information shown thereon is the sole property of TRINITY INDUSTRIES, INC. Neither the drawing nor such information is to be used for any purpose other than that for which it was specifically furnished by TRINITY INDUSTRIES, INC., nor is any reproduction authorized without written permission. | | | |
| <h2>6'-0" POST/W6 x 8.5#</h2> <h3>STEEL YIELDING TERMINAL POST</h3> | | | |
| DRAWN: BT | CHKD: BT | SCALE: N.T.S. | DATE: 04/24/03 |
| DRAWING NO: 14578 | | REV. 1 | |