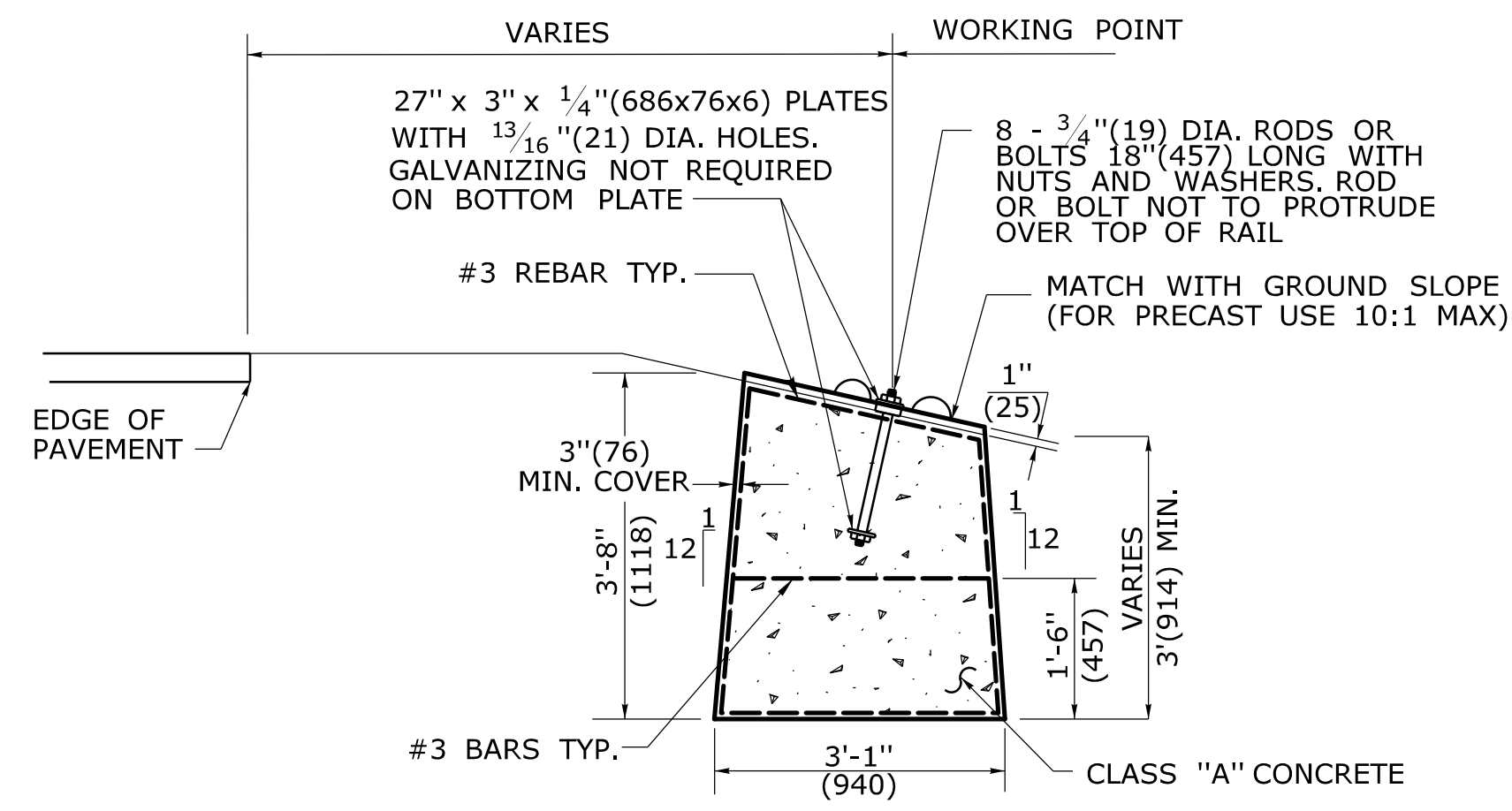
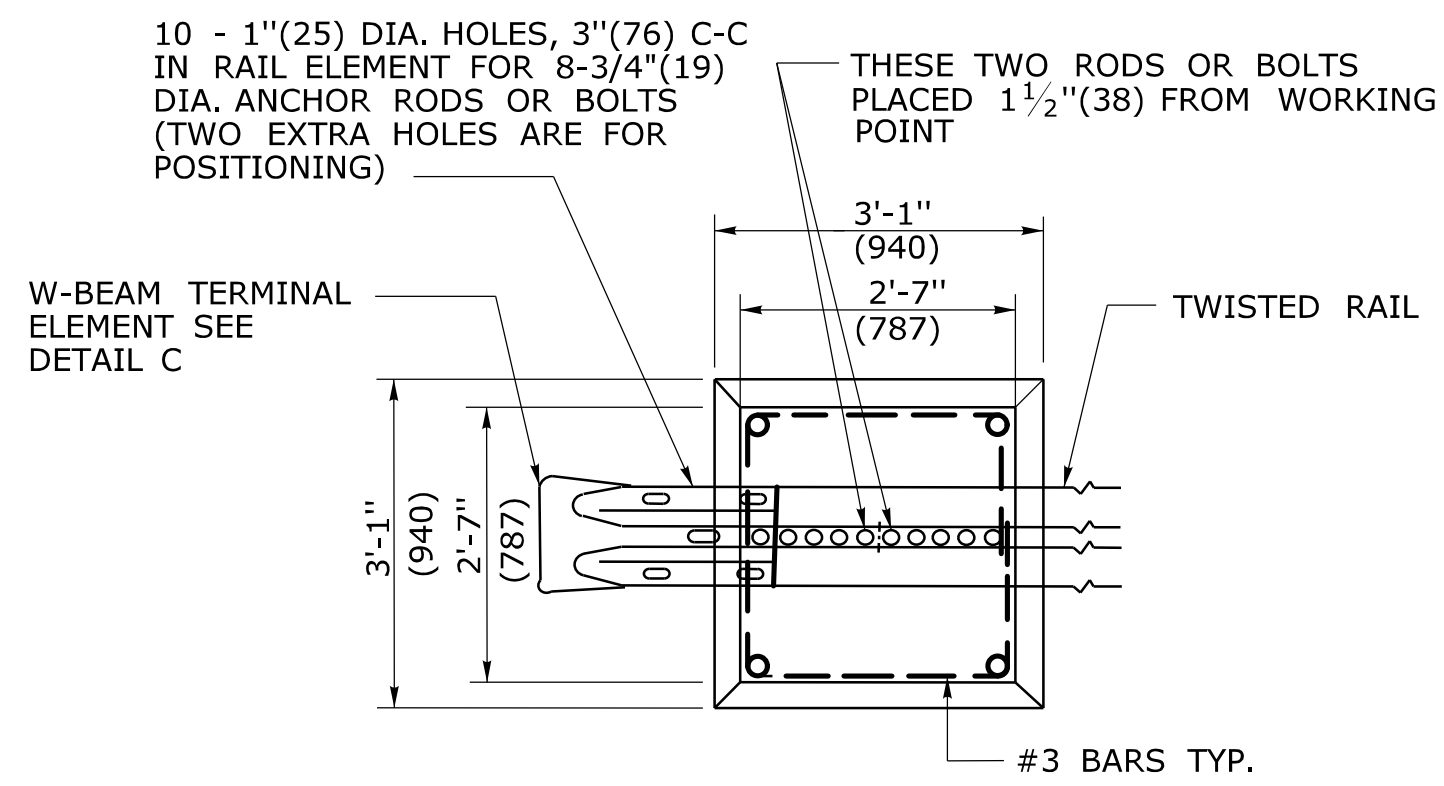


GENERAL NOTES:

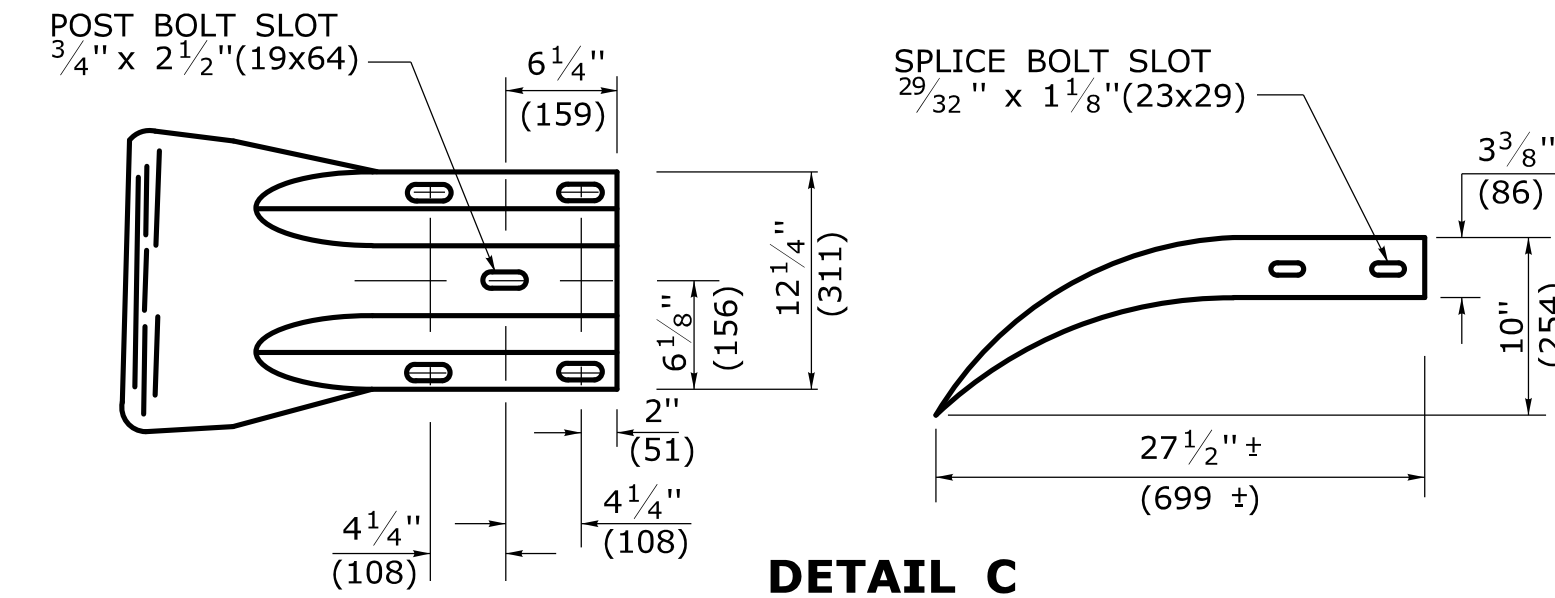
1. R-B END ANCHORAGE TYPE I INSTALLED ON FREEWAYS AND RAMP SHALL USE CLASS B (10 GAUGE) TERMINAL AND W-BEAM RAIL ELEMENTS. ALL OTHER R-B END ANCHORAGE TYPE I SHALL USE 12 GAUGE TERMINAL AND W-BEAM RAIL ELEMENTS.
2. R-B END ANCHORAGE TYPE II MAY ONLY BE USED WHEN THE RAIL IS TURNED AND EXTENDED INTO A DRIVEWAY BEYOND CLEAR ZONE, ON ROADS WITH DESIGN SPEEDS < 45mph (72kph) TYPE II END ANCHORS SHALL USE CLASS A (12 GAUGE) TERMINAL ELEMENTS.
3. OTHER RADII WHICH CAN BE DEMONSTRATED TO PROVIDE THE INSTALLATIONS SHOWN FOR END ANCHORAGE TYPE II MAY BE APPROVED.
4. J-HOOK BOLTS MAY BE SUBSTITUTED FOR BOTTOM PLATE ANCHORAGE IN CONCRETE END ANCHORS USING THE SAME SIZE, STRENGTH, AND LENGTH AS NOTED ON THE PLANS.
5. MINIMUM RAIL HEIGHT FOR NEW CONSTRUCTION SHALL BE 29" (737) + 1' (25).



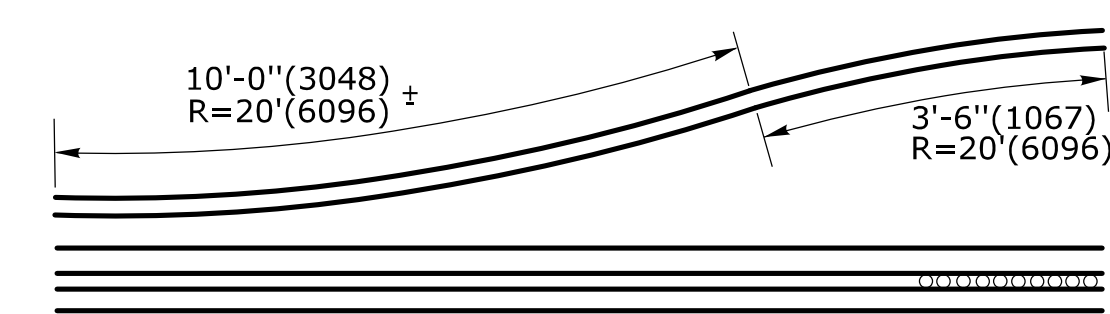
**ELEVATION
DETAIL A
CONCRETE END ANCHOR
FOR ROADSIDE**



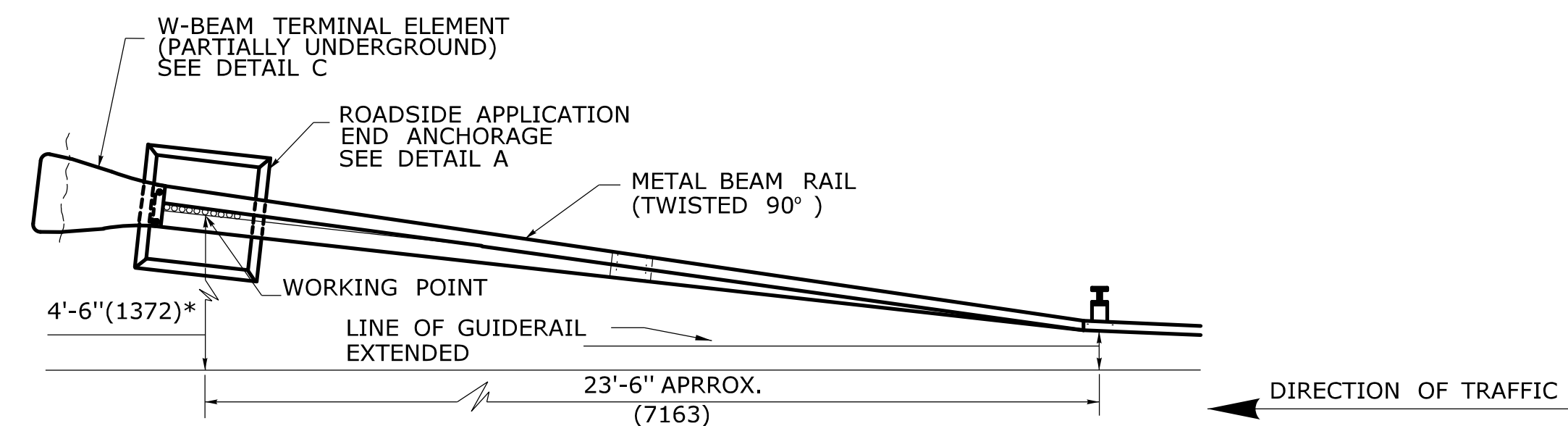
PLAN



**W-BEAM TERMINAL ELEMENT
DETAIL C**

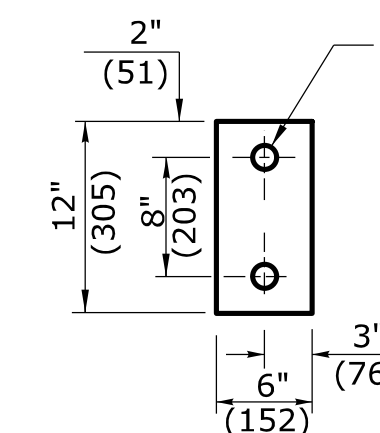


**DETAIL D
SHOP CURVED RAIL
SEE NOTE 3**



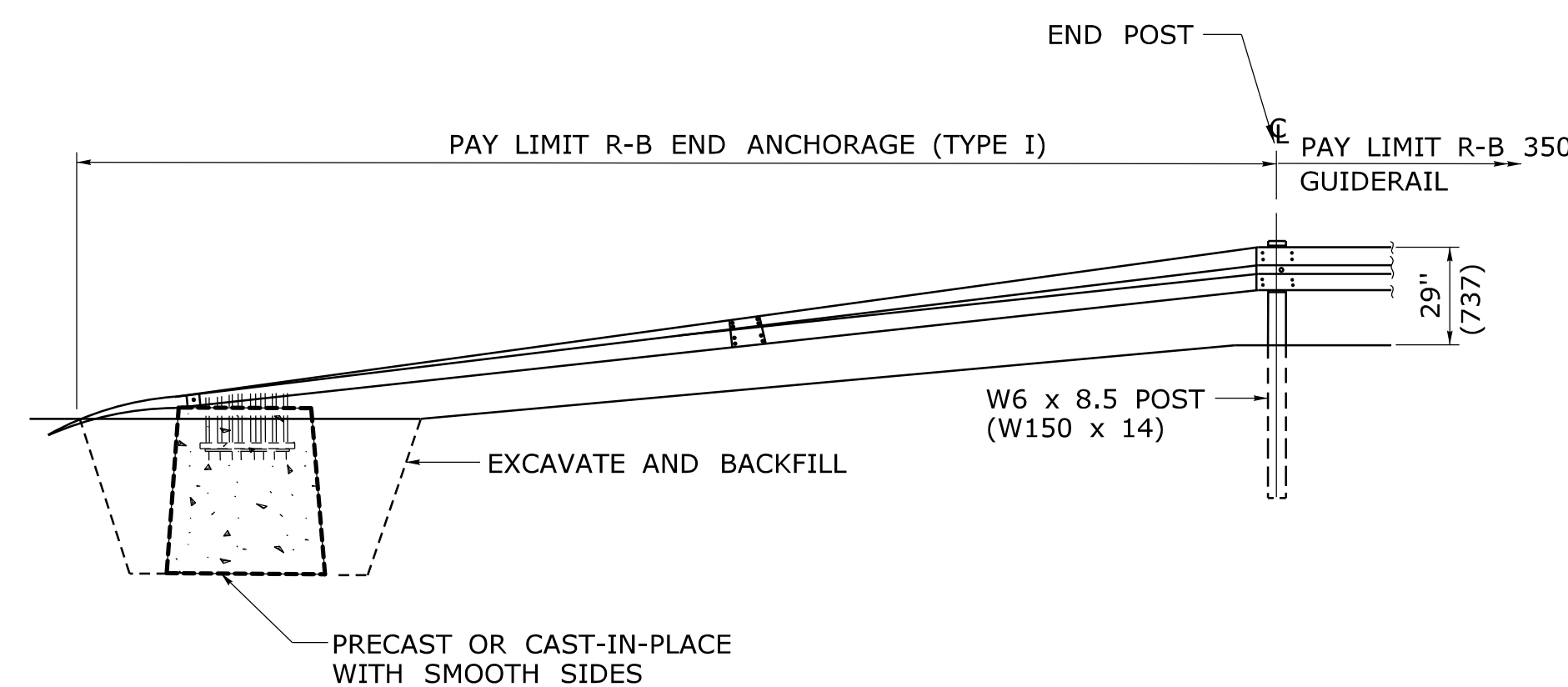
PLAN

* OFFSET DIMENSIONS FROM FACE OF RAIL FOR TRAILING END ANCHORAGE SHOWN. FOR LEADING END ANCHORS, THE END POST SHALL BE PLACED AT THE CLEAR ZONE AND THEN THE ANCHOR PLACED 4'-6" (1372) FROM THE LINE OF GUIDERAIL EXTENSION OR AS DIRECTED BY THE ENGINEER.

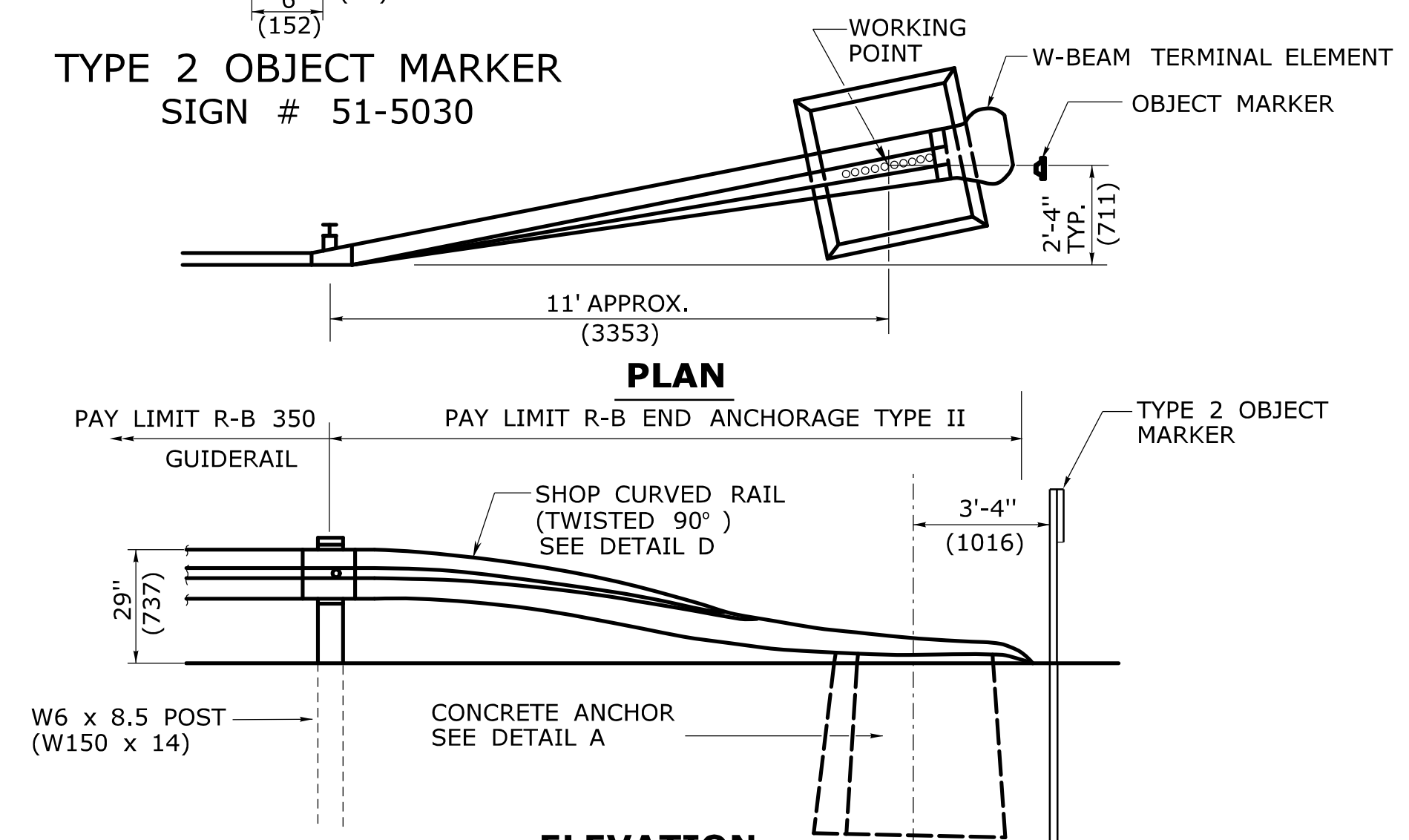


**TYPE 2 OBJECT MARKER
SIGN # 51-5030**

OBJECT MARKER FACE SHALL BE YELLOW TYPE III RETROREFLECTORIZED. THE BOTTOM OF TYPE 2 OBJECT MARKER SHALL BE 4' (1219) ABOVE GROUND LEVEL MOUNTED ON METAL DELINEATOR POST. TO IDENTIFY CULVERT ENDS AND TYPE II END ANCHORS OR AS DIRECTED BY THE ENGINEER.



**ELEVATION
R-B END ANCHORAGE TYPE I
(ROADSIDE APPLICATION)**

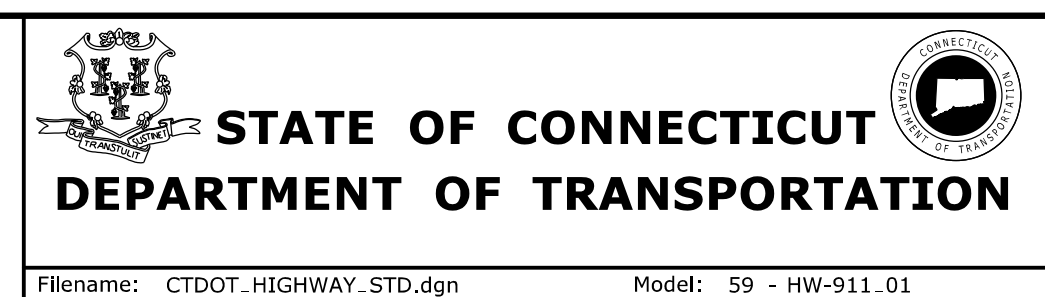


**ELEVATION
R-B END ANCHORAGE TYPE II
SEE NOTE 2**

ALL METRIC DIMENSIONS ARE IN MILLIMETERS (mm) UNLESS OTHERWISE NOTED.

REV.	DATE	REVISION DESCRIPTION
-	-	-
-	-	-
-	-	-
-	-	-
-	-	-
-	-	-
-	-	-

NOT TO SCALE



SUBMITTED BY: NAME/DATE/TIME:
APPROVED BY: NAME/DATE/TIME:

**CTDOT
STANDARD SHEET
OFFICE OF ENGINEERING**

STANDARD SHEET TITLE:
**R-B END ANCHORAGE
TYPE I AND II**

STANDARD SHEET NO.:
HW-911_01