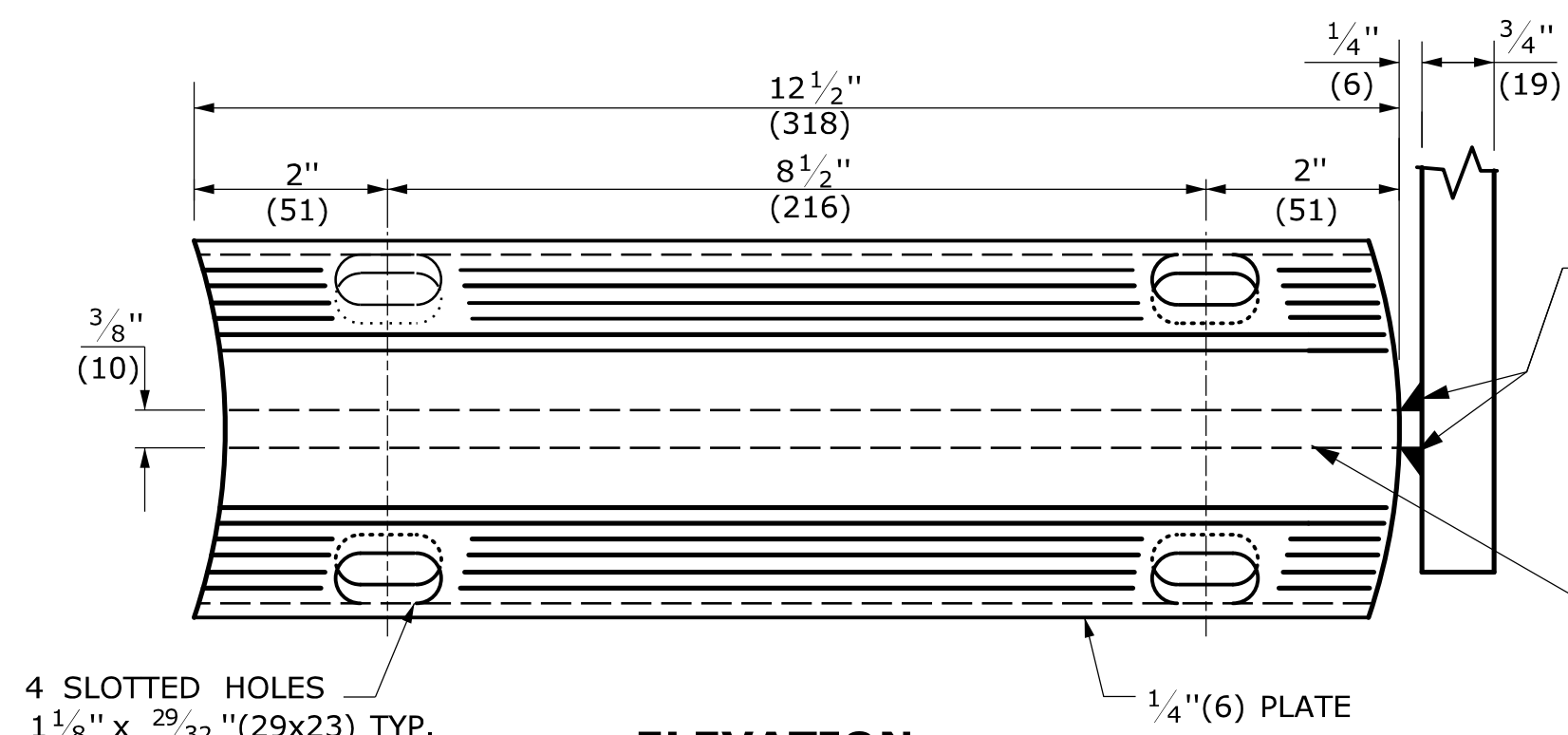
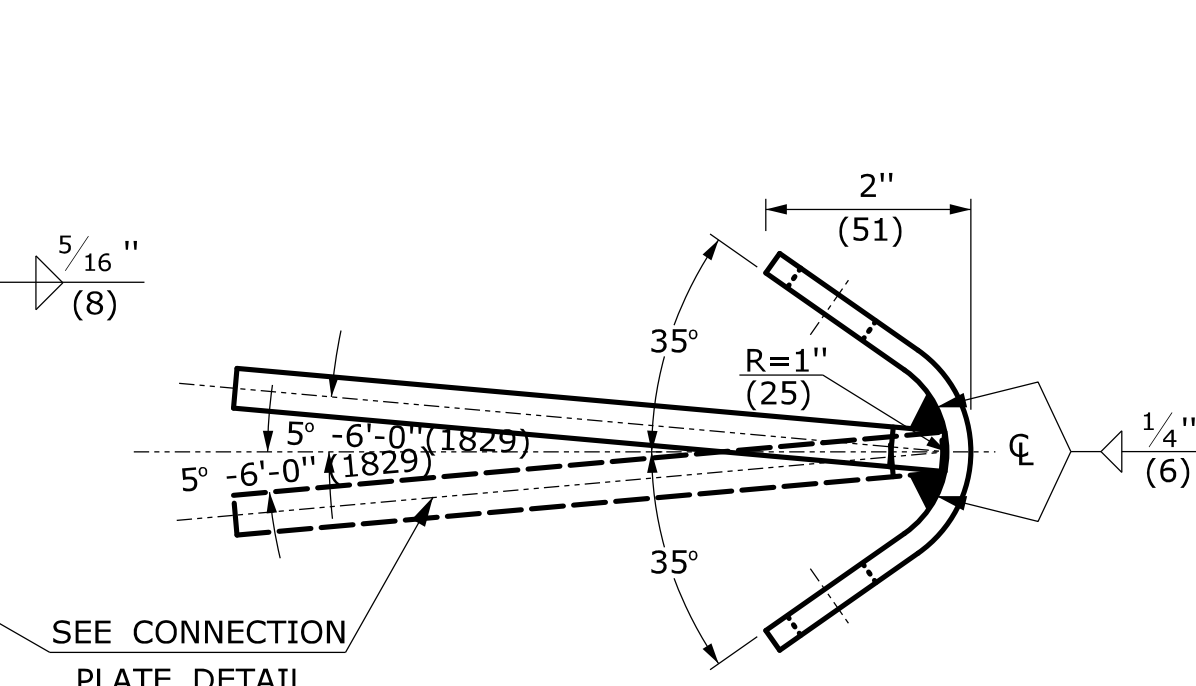


GENERAL NOTES:

1. SEE SHEET HW-910_01 FOR HARDWARE AND DELINEATOR DETAILS.
2. IF PROPOSED R-B 350 GUIDERAIL IS BEING ATTACHED TO A PARAPET USING EXISTING ANCHOR BOLTS FROM R-I GUIDERAIL INSTALLED AT A 33" (838) RAIL HEIGHT, A 4" (102) HEIGHT TRANSITION OVER 25' (7.62m) SHALL BE PROVIDED.
3. FOR EXISTING PARAPETS, USE THREE 1" (25) DIA. x 14" (356) LONG, FULLY THREADED, CHEMICALLY ANCHORED BOLTS AND WASHERS WITH 12" (305) EMBEDMENT DEPTH. FOR ANCHORAGE IN NEW PARAPETS, SEE STRUCTURE SHEETS.
4. USE CLASS B TYPE II (10 GAUGE) W-BEAM RAIL ELEMENT FOR INSTALLATIONS ON EXPRESSWAYS AND RAMP.
5. TRAILING END ATTACHMENT MAY ALSO BE INSTALLED AT A VERTICAL FACE PARAPET OR RETAINING WALL ON ONE-WAY ROADWAYS ONLY.
6. MINIMUM RAIL HEIGHT FOR NEW CONSTRUCTION SHALL BE 29" (737) ± 1" (25).



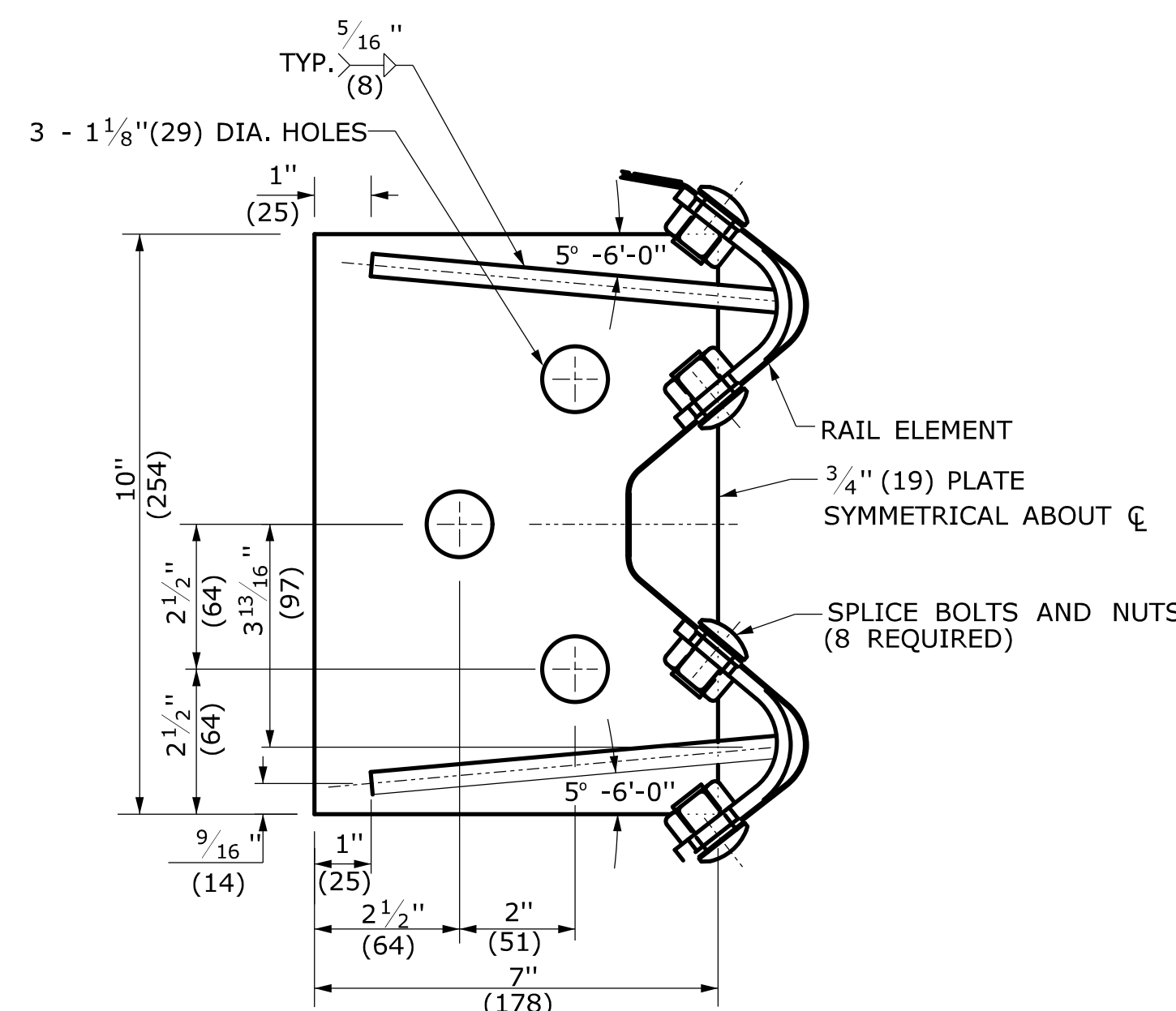
ELEVATION



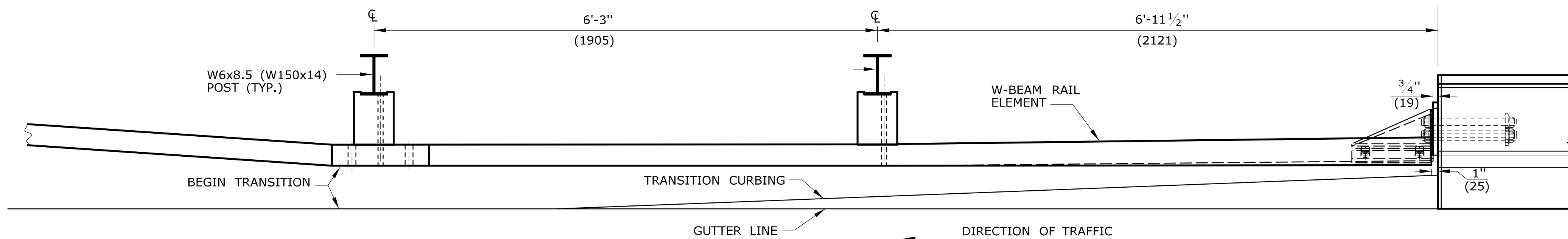
SIDE

BENT PLATE

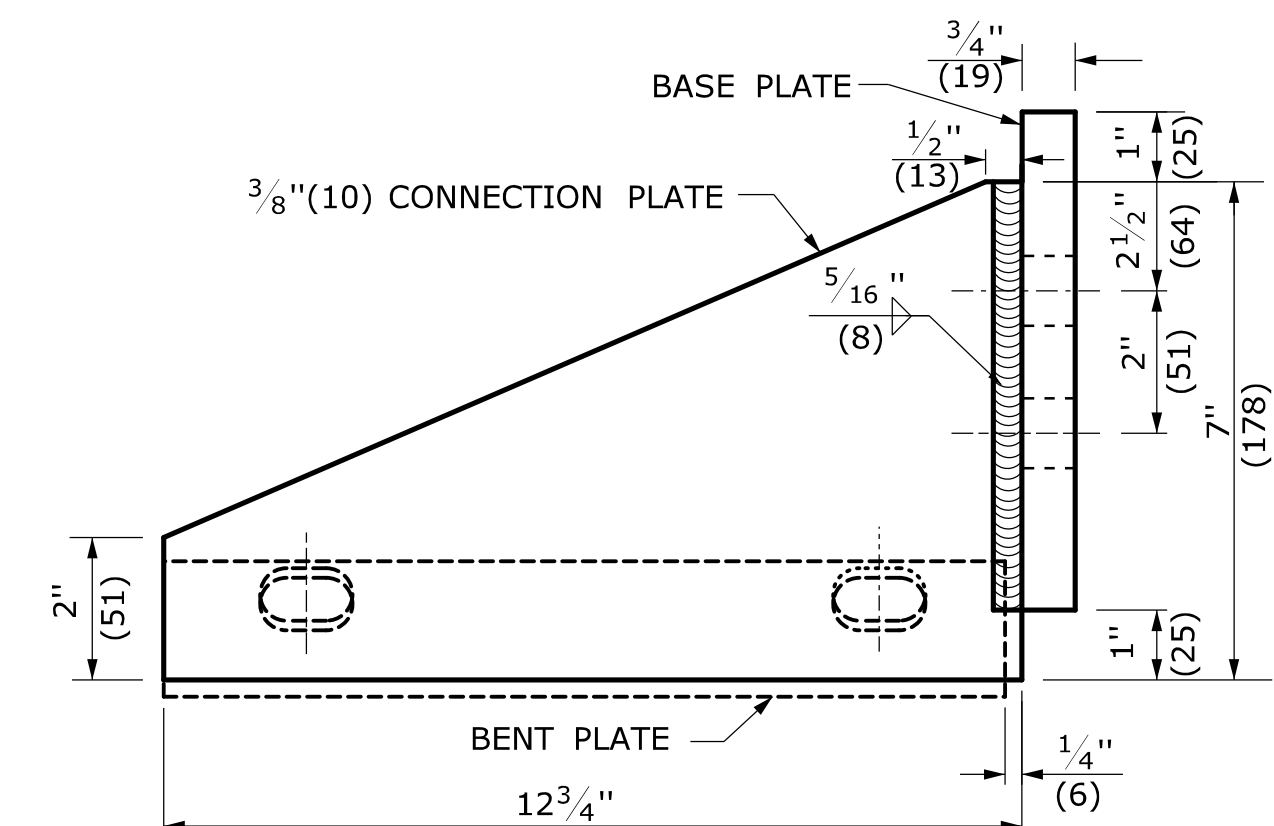
(2 REQUIRED)



BASE PLATE AND ASSEMBLY

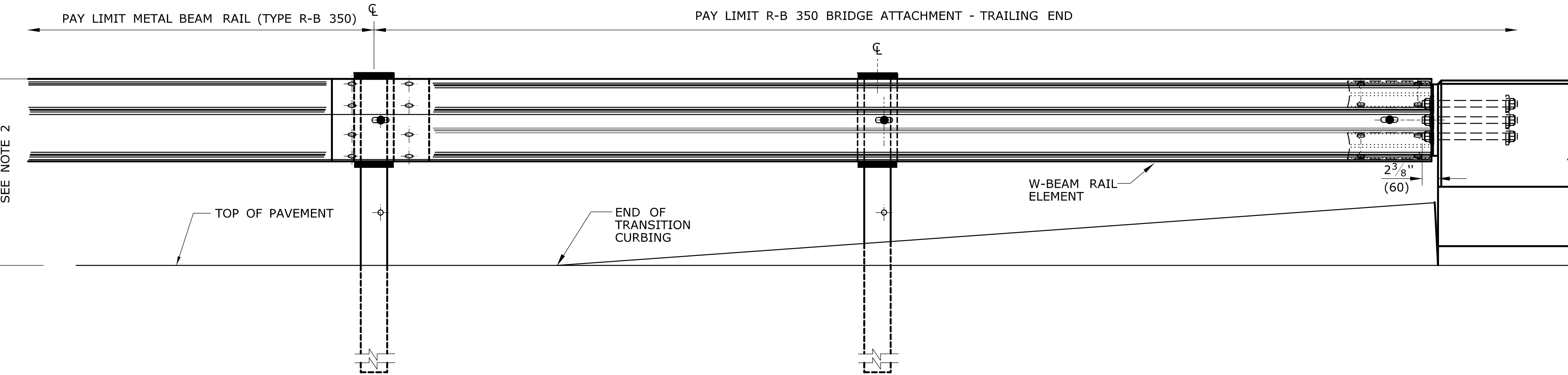


PLAN

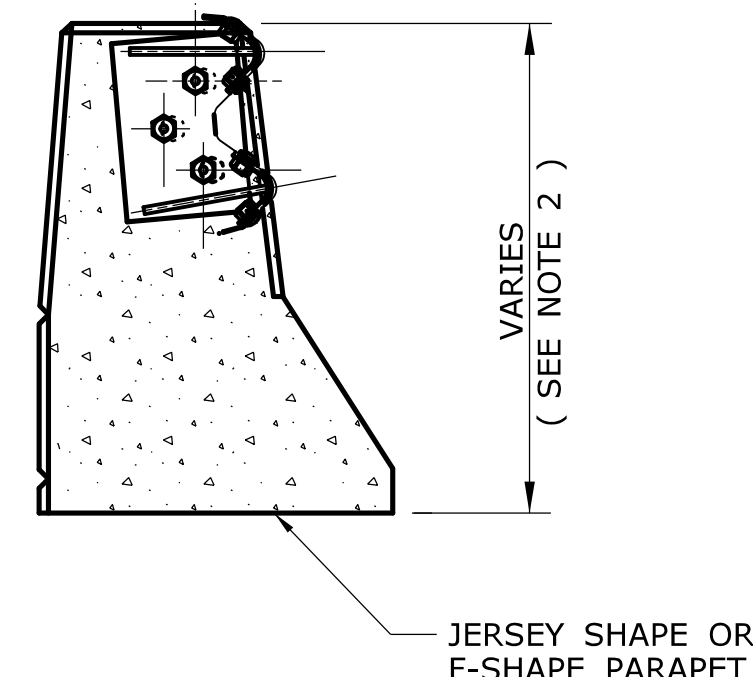


CONNECTION PLATE DETAIL

(2 REQUIRED)



**ELEVATION
ATTACHMENT AT TRAILING END OF BRIDGE PARAPET
(ONE-WAY ROADWAY ONLY)**



**BASE PLATE AND ASSEMBLY ATTACHMENT
TO TRAILING END OF CONCRETE BARRIER
OR BRIDGE PARAPET (SEE NOTE 5)**

ALL METRIC DIMENSIONS ARE IN MILLIMETERS (mm) UNLESS OTHERWISE NOTED.

<p>THE INFORMATION, INCLUDING ESTIMATED QUANTITIES OF WORK, SHOWN ON THESE SHEETS IS BASED ON LIMITED INVESTIGATIONS BY THE STATE AND IS IN NO WAY WARRANTED TO INDICATE THE CONDITIONS OF ACTUAL QUANTITIES OF WORK WHICH WILL BE REQUIRED.</p>		<p>NOT TO SCALE</p>	<p>STATE OF CONNECTICUT DEPARTMENT OF TRANSPORTATION</p>	<p>SUBMITTED BY: _____ NAME/DATE/TIME: _____</p> <p>APPROVED BY: _____ NAME/DATE/TIME: _____</p>	<p>CTDOT STANDARD SHEET</p> <p>OFFICE OF ENGINEERING</p>	<p>STANDARD SHEET TITLE:</p> <p>R-B 350 BRIDGE ATTACHMENT TRAILING END</p>	<p>STANDARD SHEET NO.:</p> <p>HW-910_08</p>	
REV.	DATE	REVISION DESCRIPTION	Plotted Date: 10/13/2010	Filename: CTDOT_HIGHWAY_STD_OCT2010.dgn Model: 43 - HW-910_08				