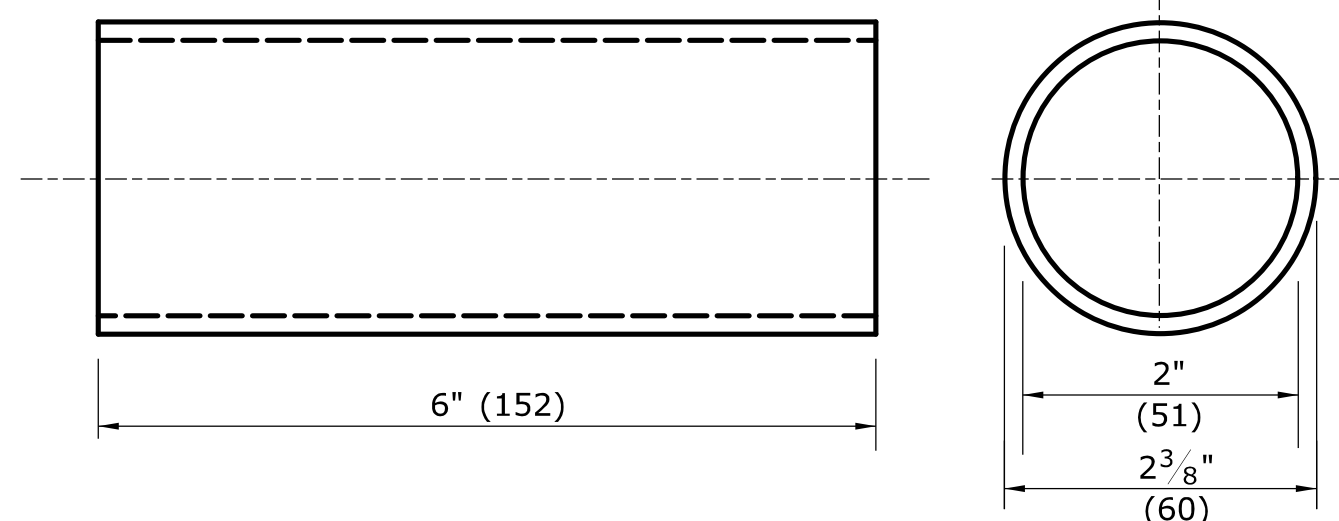
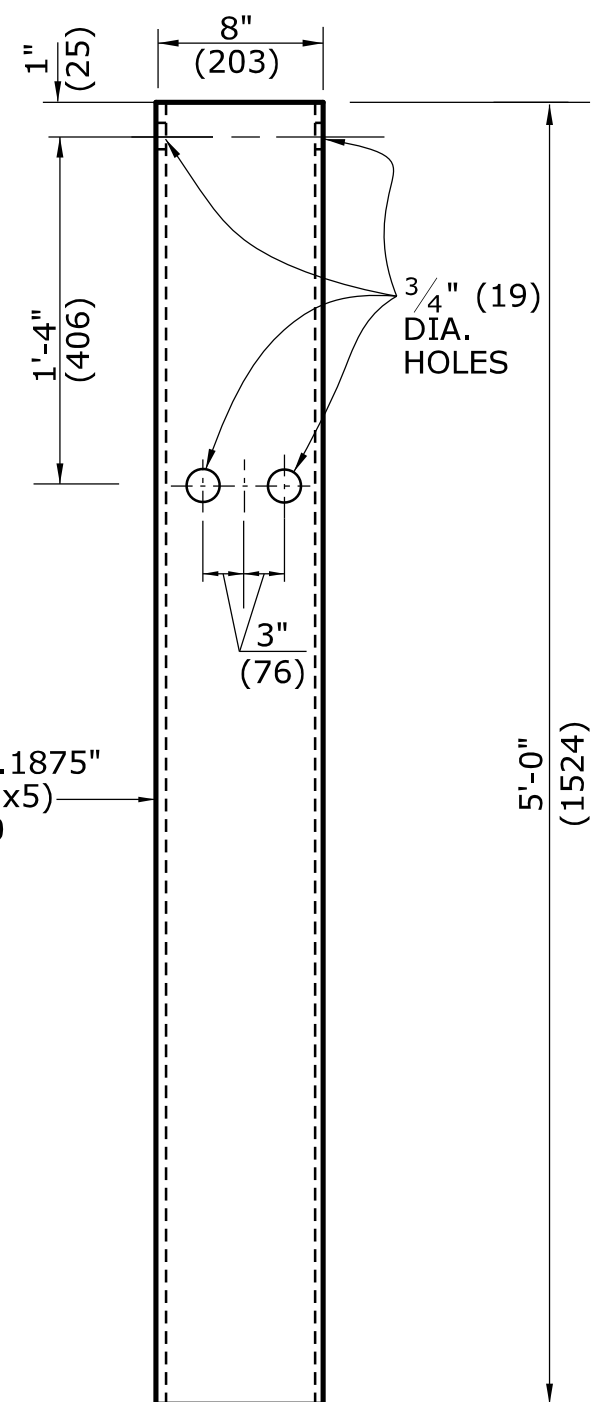


**DETAIL A
CABLE ANCHORAGE ASSEMBLY**

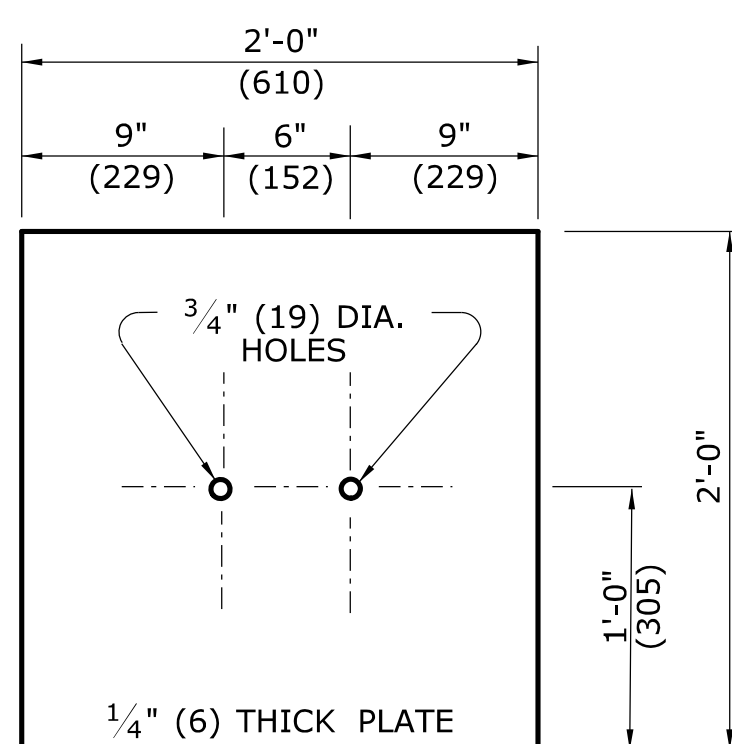


**BREAKAWAY TERMINAL POST SLEEVE
(ARTBA-FMMO2)**

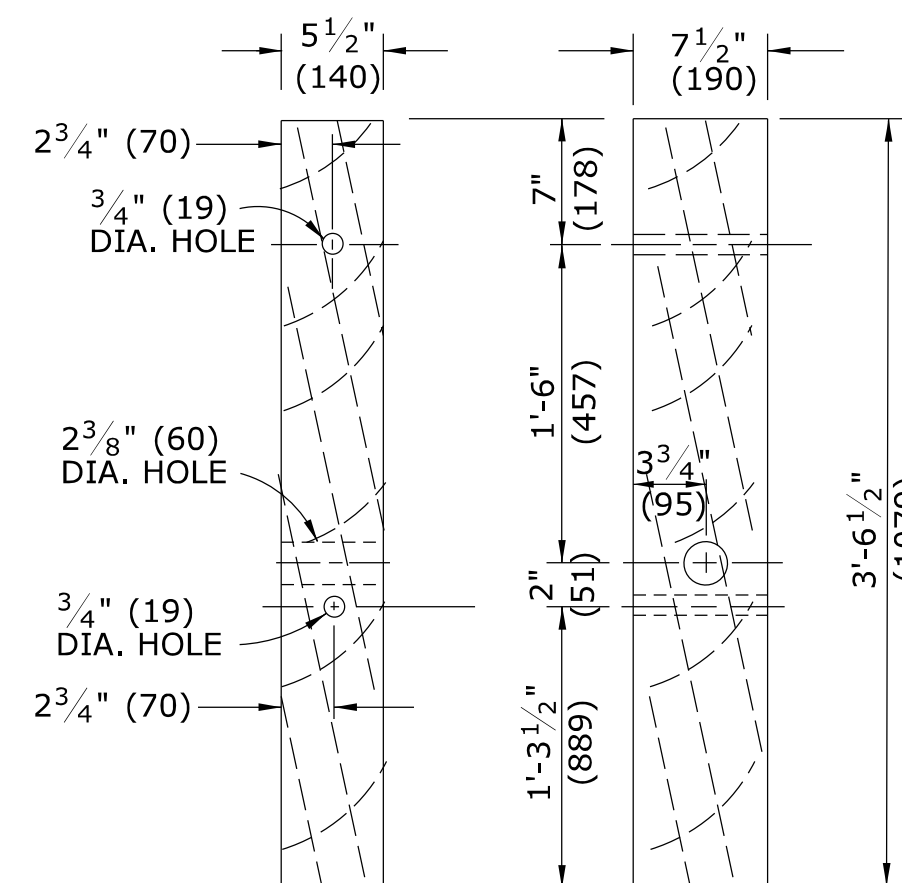
TS 8"x6"x0.1875"
(TS203x152x5)
ASTM A500
Grade B
or A501



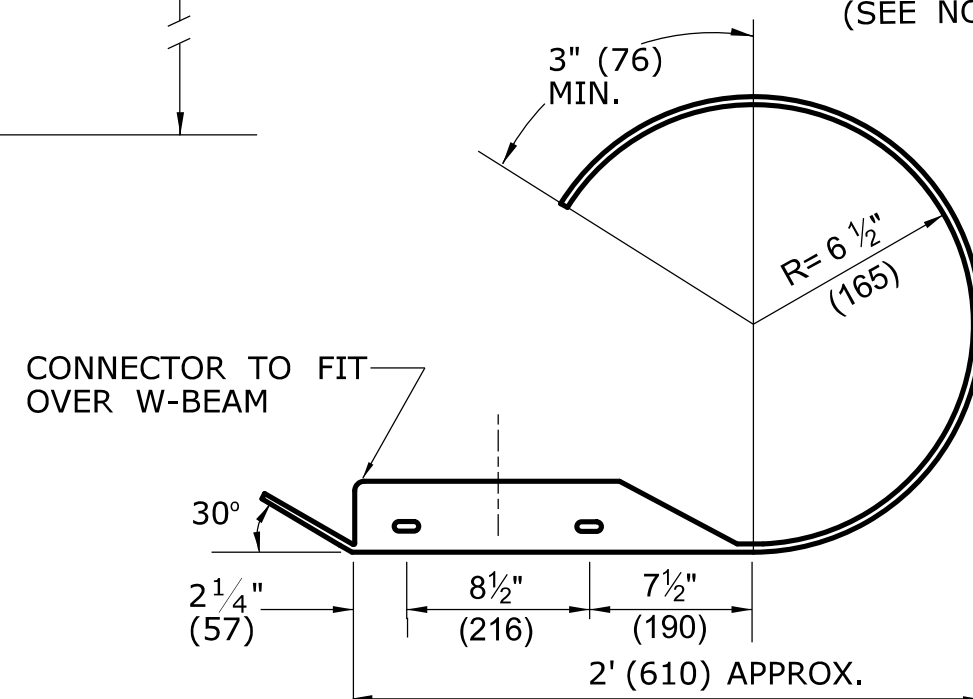
STEEL TUBE



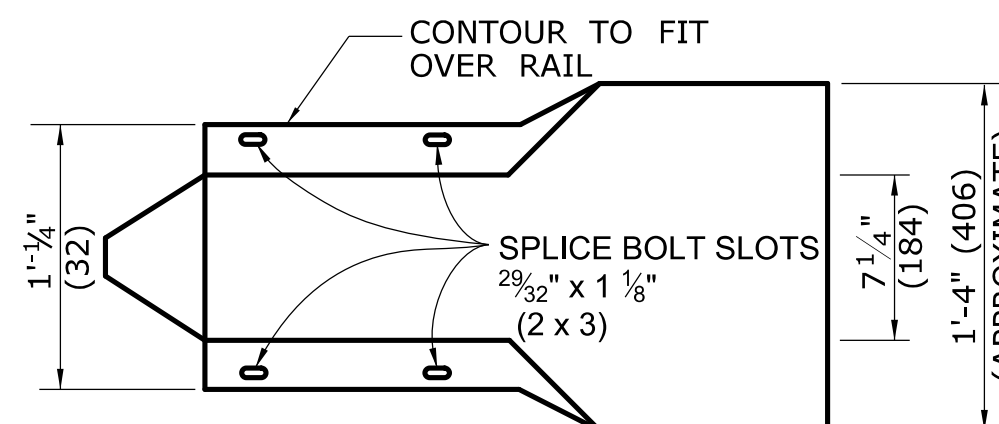
SOIL PLATE (2 Req'd)



**DETAIL C
TIMBER TERMINAL POST
(ARTBA-PDFO1)
(SEE NOTE 2)**

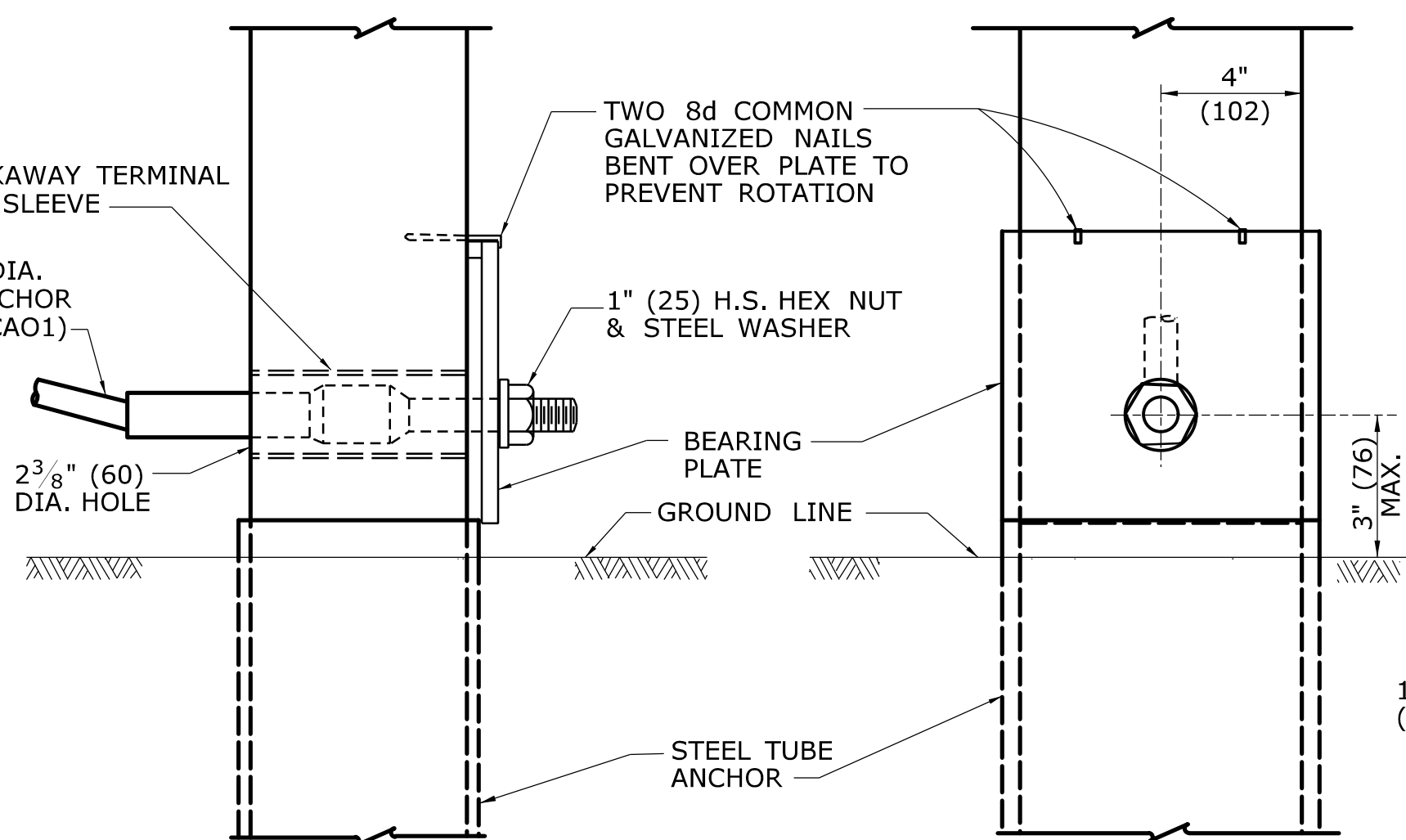


PLAN

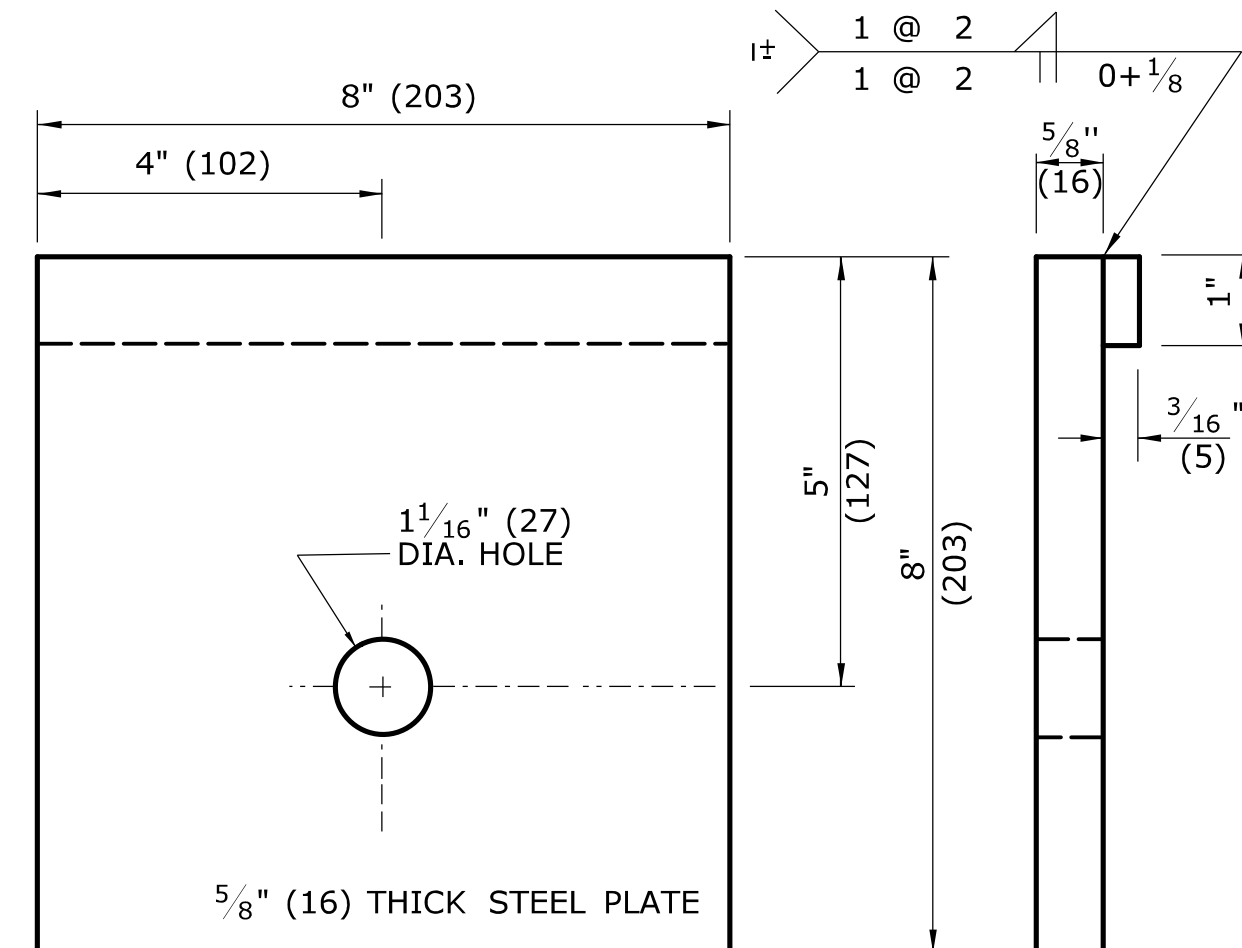


ELEVATION

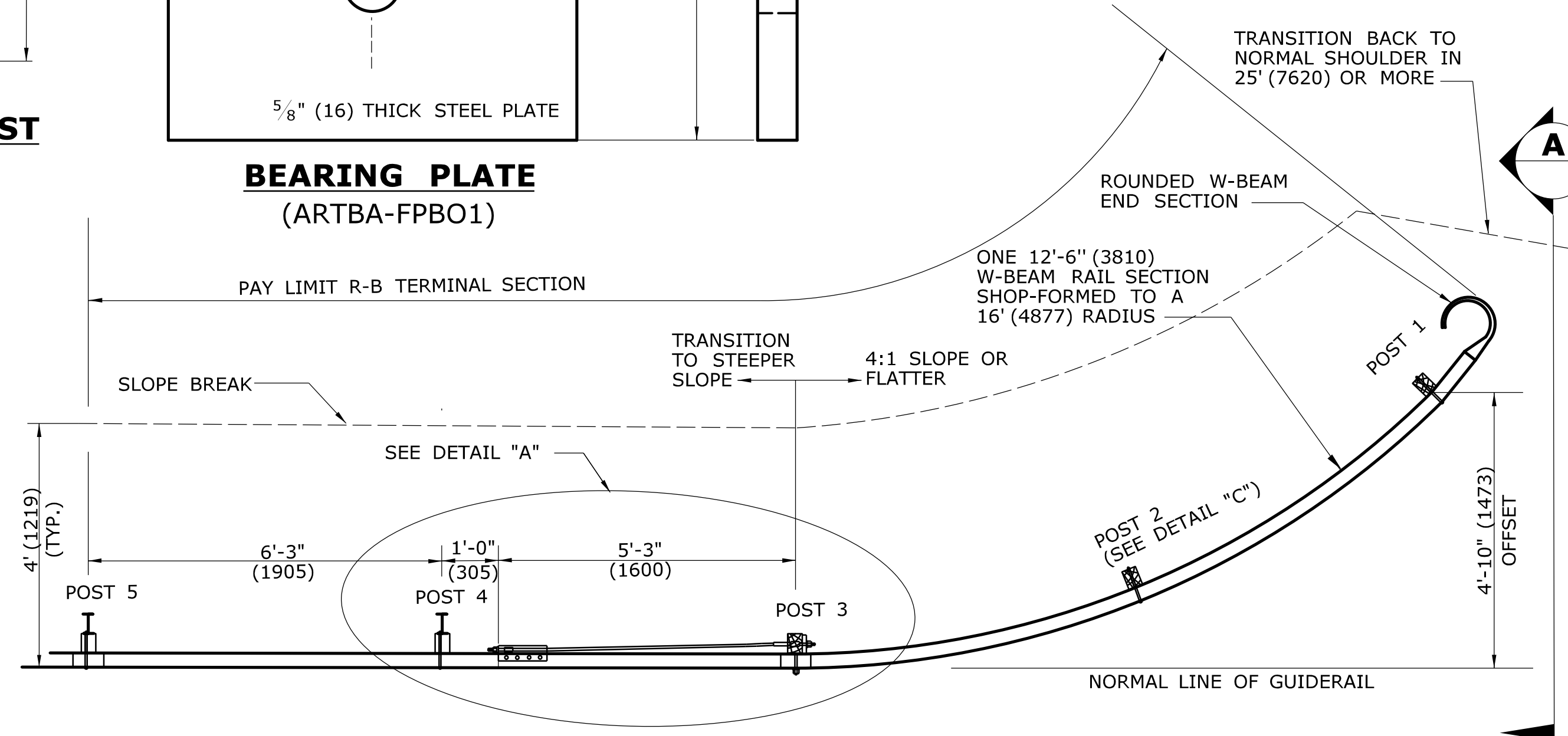
ROUNDED W-BEAM END SECTION



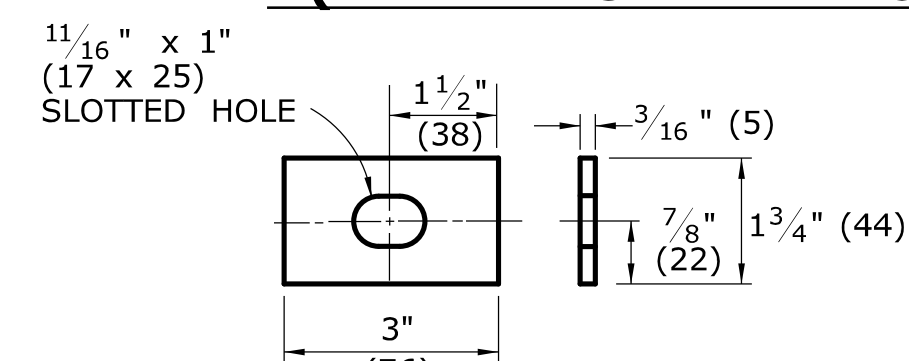
DETAIL B



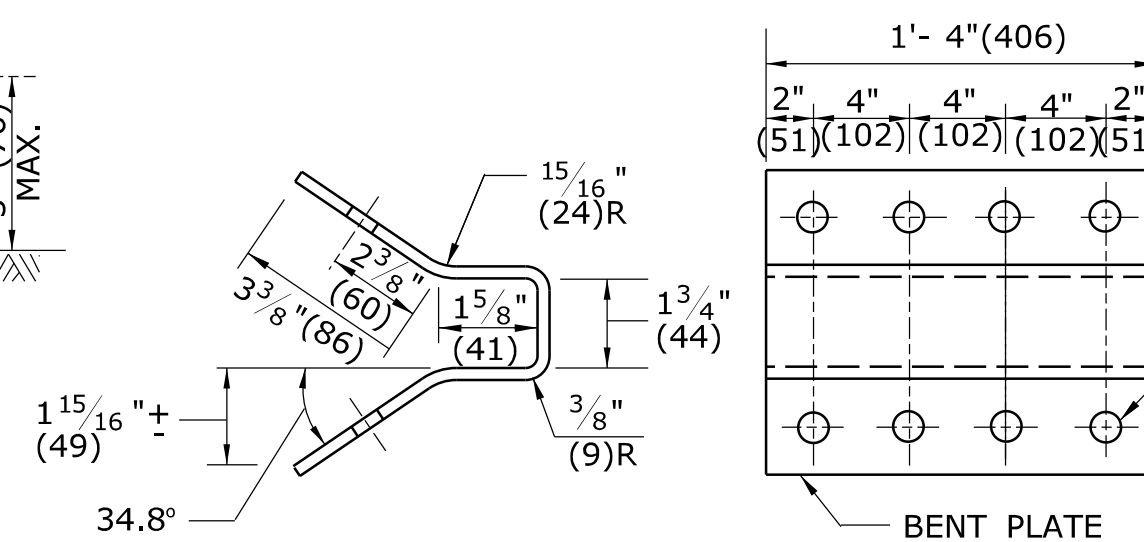
**BEARING PLATE
(ARTBA-FPBO1)**



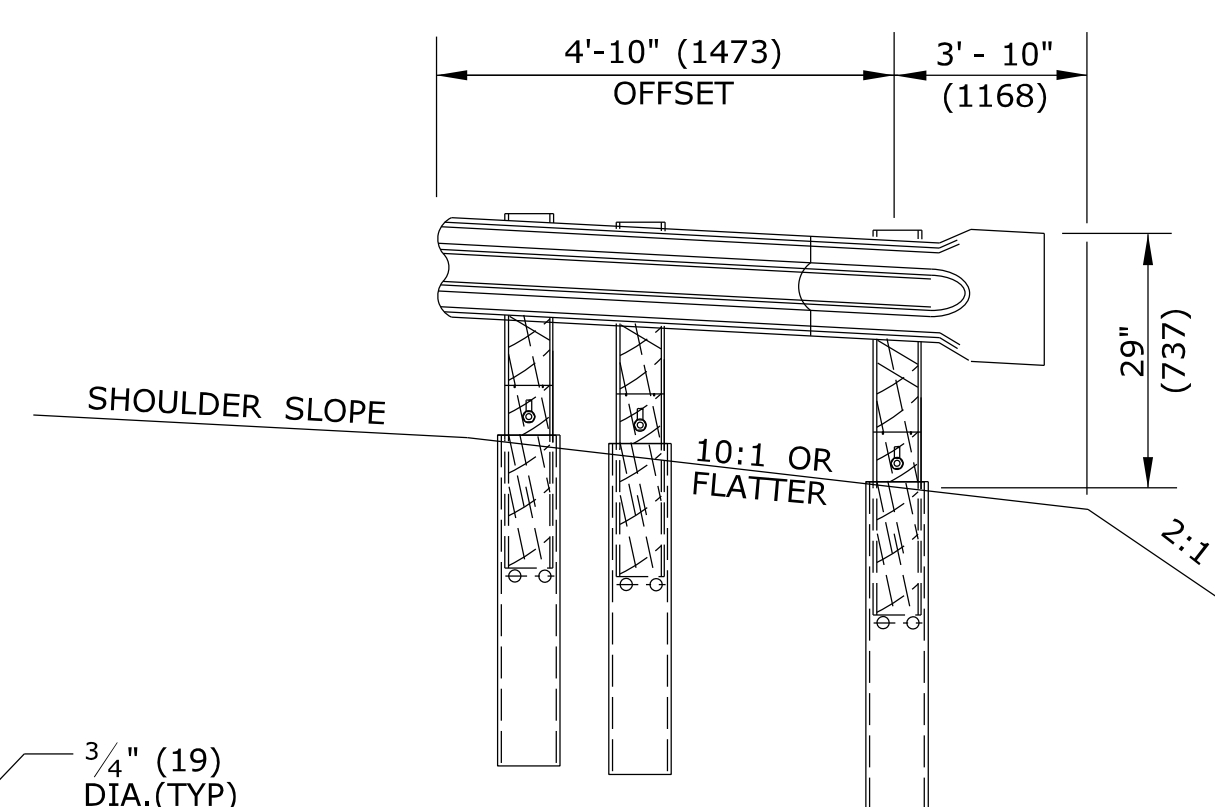
**APPROACH END
(TRAILING END NOT SHOWN)**



**DETAIL D
RECTANGULAR PLATE WASHER**



**ANCHOR PLATE
(ARTBA-FPAO1)**



SECTION A

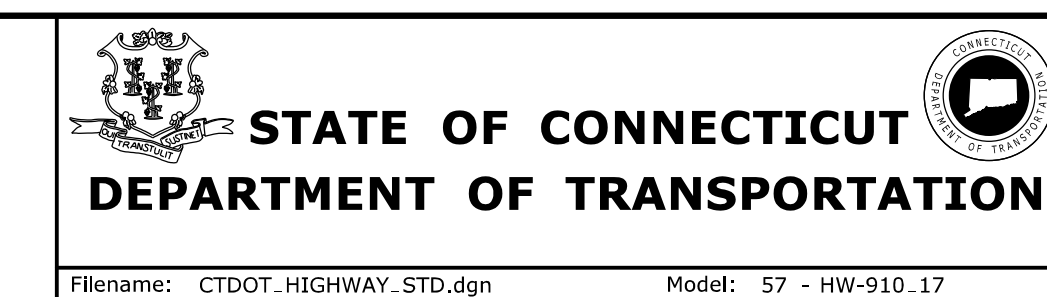
GENERAL NOTES:

1. APPROACH END R-B TERMINAL SECTION SHALL ONLY BE USED ON LOW SPEED (<45 MPH) ROADWAYS AT DRIVEWAYS OR INTERSECTING ROADS.
2. POSTS 1, 2 AND 3 ARE TIMBER TERMINAL POSTS (DETAIL "C") WITH STEEL TUBES, POSTS 4 AND 5 ARE STANDARD R-B 350 STEEL POSTS WITH BLOCKOUTS.
3. REFER TO CTDOT STANDARD SPECIFICATIONS FOR MATERIAL AND GENERAL CONSTRUCTION METHODS.
4. MINIMUM RAIL HEIGHT FOR NEW CONSTRUCTION SHALL BE 29" (737) ± 1" (25).

ALL METRIC DIMENSIONS ARE IN MILLIMETERS (mm) UNLESS OTHERWISE NOTED.

REV.	DATE	REVISION DESCRIPTION
-	-	-
-	-	-
-	-	-
-	-	-
-	-	-
-	-	-
-	-	-
-	-	-
-	-	-

NOT TO SCALE



SUBMITTED BY: NAME/DATE/TIME:
APPROVED BY: NAME/DATE/TIME:

CTDOT
STANDARD SHEET
OFFICE OF ENGINEERING

STANDARD SHEET TITLE:
R-B TERMINAL SECTION

STANDARD SHEET NO.:
HW-910_17