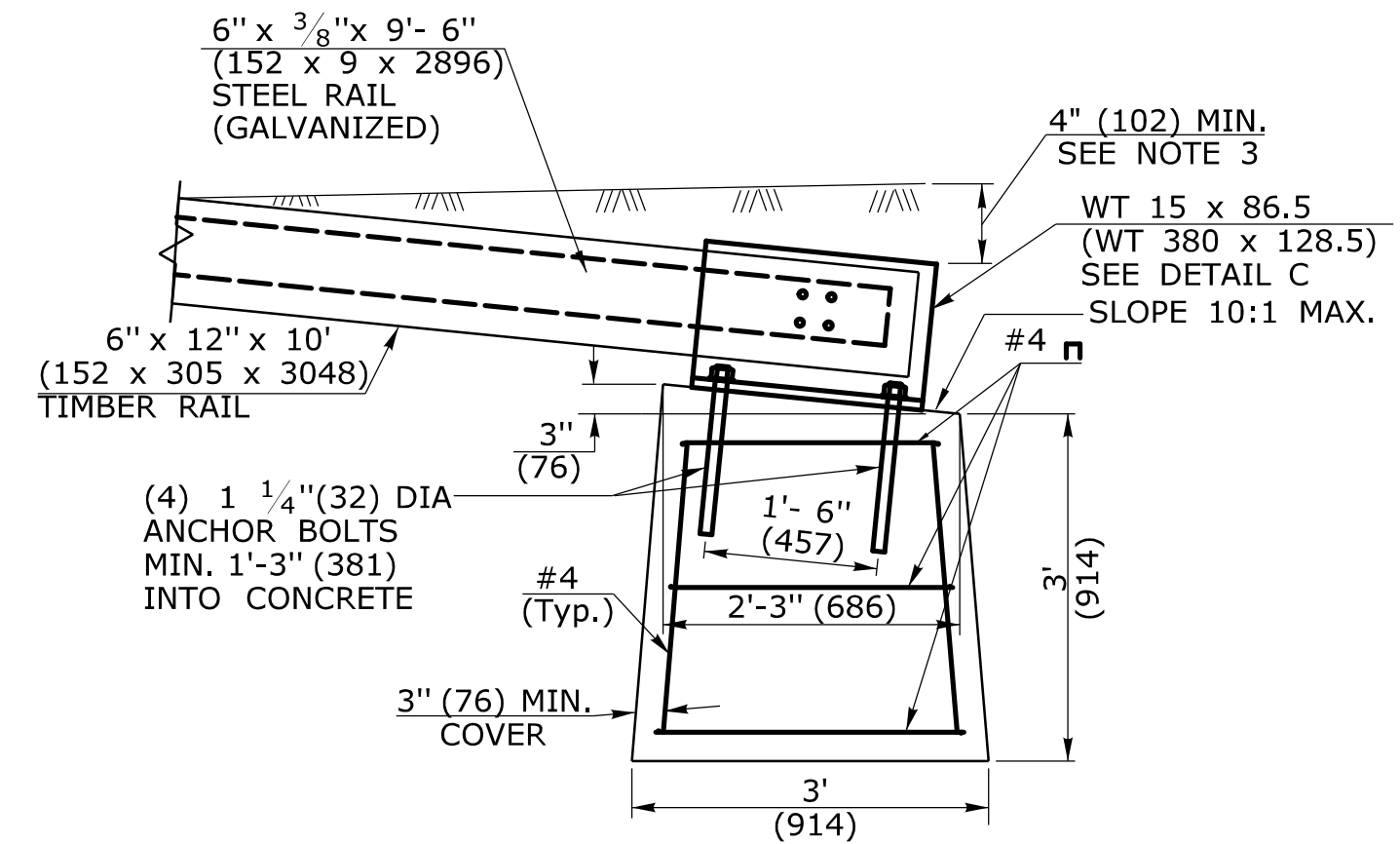


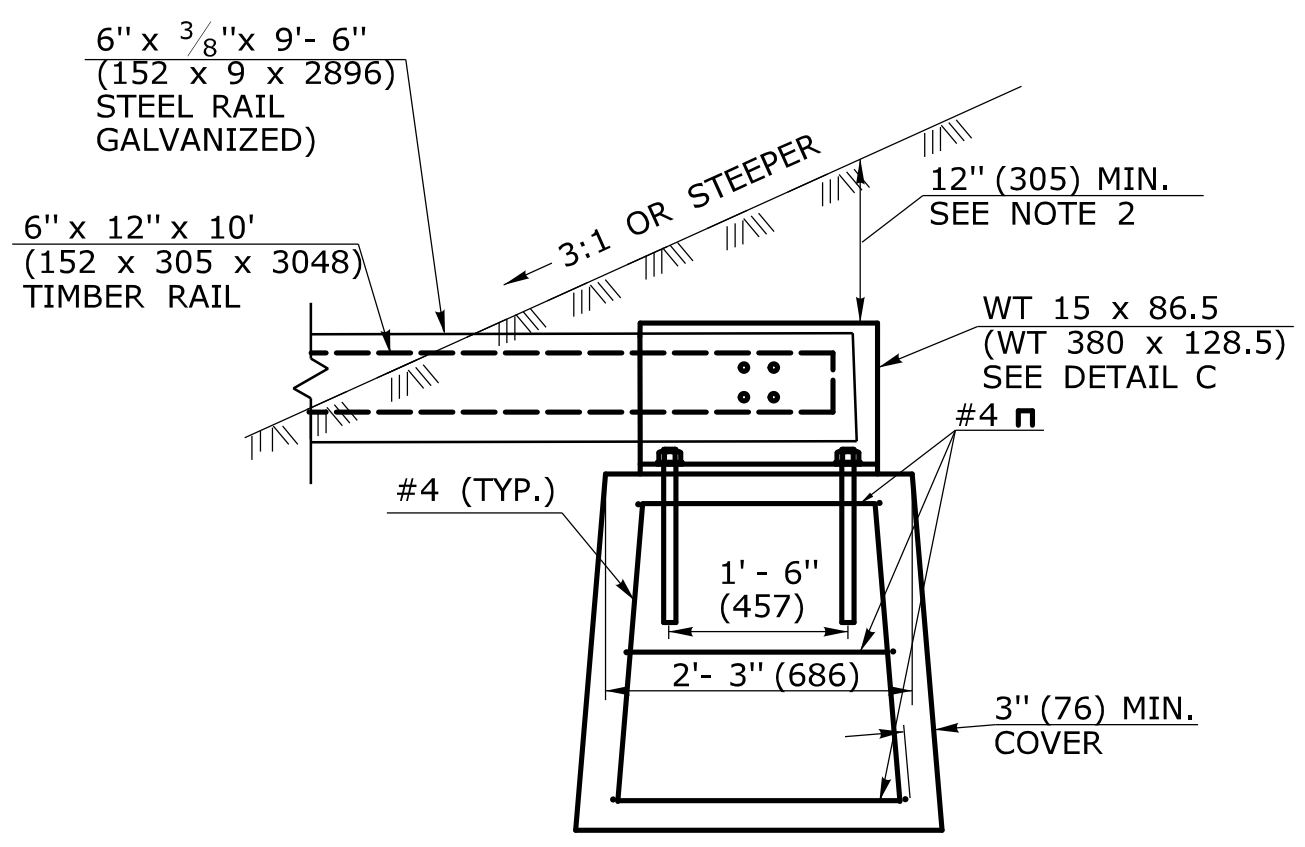
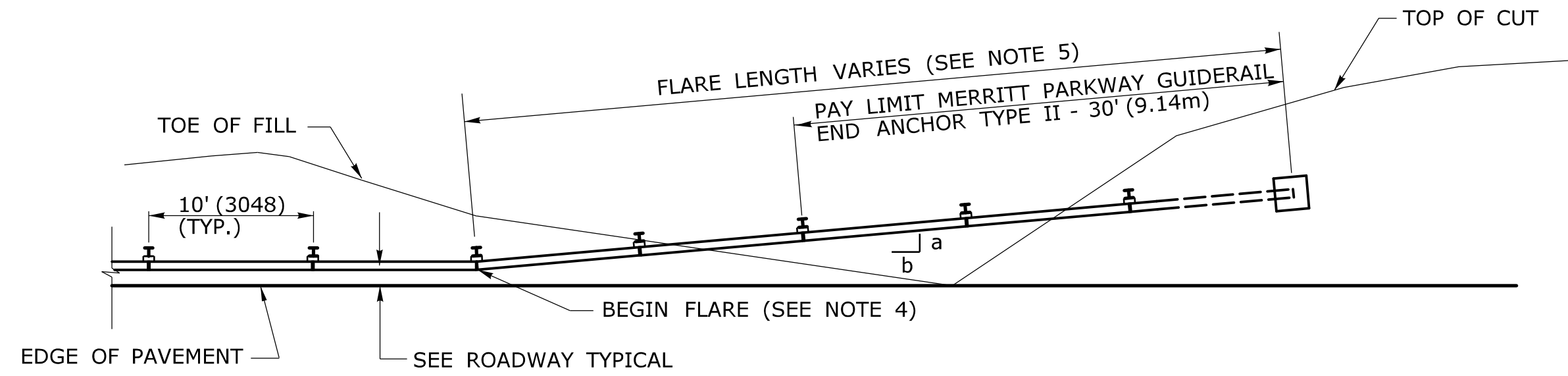
PLAN
ELEVATION
MERRITT PARKWAY GUIDERAIL END ANCHORAGE TYPE I (BURIED ANCHOR)

NOTE: SEE MISCELLANEOUS DETAILS FOR FLARE RATE a:b.

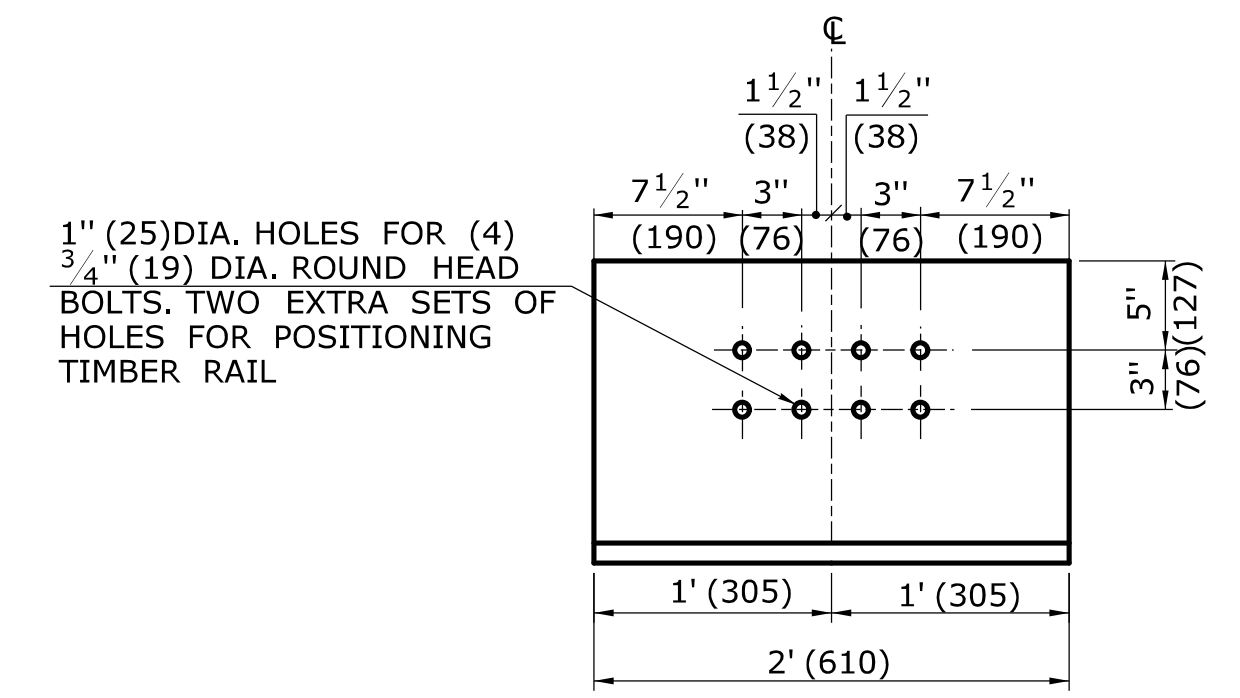


ELEVATION DETAIL A

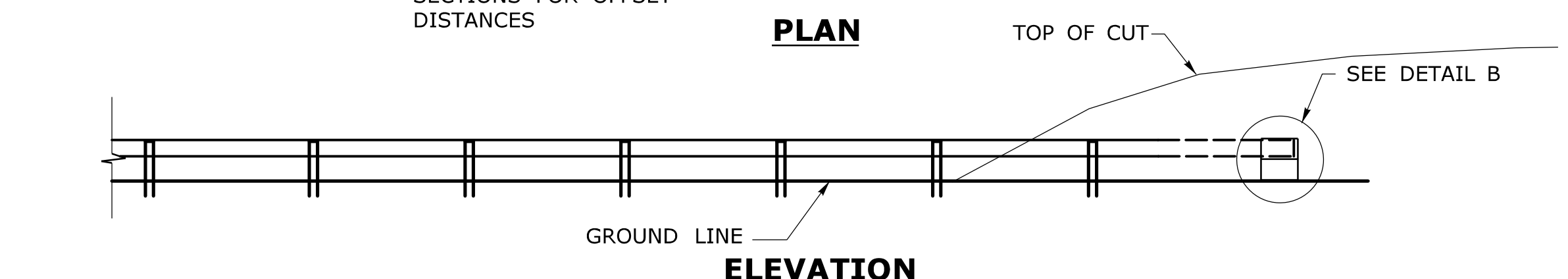
- GENERAL NOTES:**
- MATERIALS AND CONSTRUCTION OF THE MERRITT PARKWAY GUIDERAIL END ANCHORS SHALL CONFORM TO THE SPECIAL PROVISIONS PROVIDED WITH THE PROJECT. ALL HARDWARE IN CONTACT WITH THE GROUND SHALL BE GALVANIZED IN ACCORDANCE WITH THE SPECIAL PROVISION.
 - FOR THE END ANCHOR TYPE II, EXTEND THE FLARE INTO THE CUT SLOPE UNTIL A MINIMUM 12" (305) OF COVER IS OBTAINED OVER THE GUIDERAIL ELEMENT.
 - FOR THE END ANCHOR TYPE I, EXTEND THE FLARE OUTSIDE THE CLEAR ZONE AND BURY THE GUIDERAIL ANCHOR AND ELEMENT TO OBTAIN A MINIMUM COVER OF 4" (102). SEE DETAIL A.
 - BEGIN THE FLARE AT THE NEAREST POST TO A TRANSITION POINT BETWEEN FILL AND CUT AS DIRECTED BY THE ENGINEER.
 - THE GUIDERAIL FLARE SHOWN ON THE MISCELLANEOUS DETAILS IS THE MINIMUM LENGTH AND RATE REQUIRED AS DIRECTED BY THE ENGINEER. FLARE THE GUIDERAIL SO THAT THE TERMINAL SECTION IS OUTSIDE THE CLEAR ZONE.



ELEVATION DETAIL B

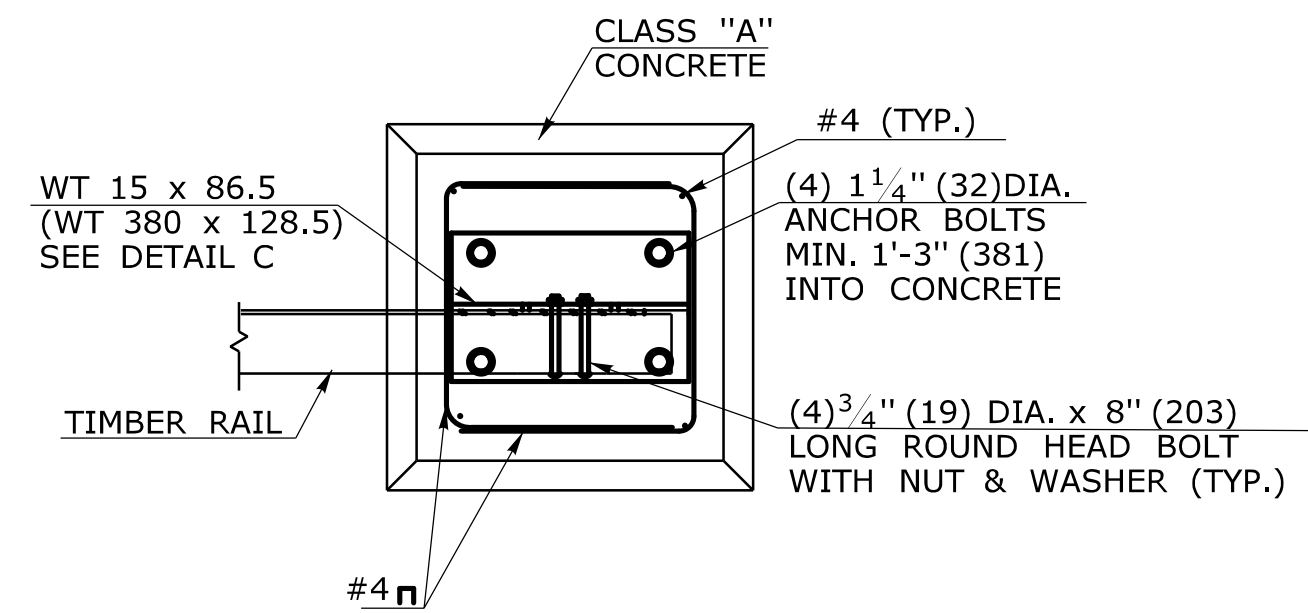


ELEVATION DETAIL C
WT 15 x 86.5 (GALVANIZED)
(WT 380 x 128.5)

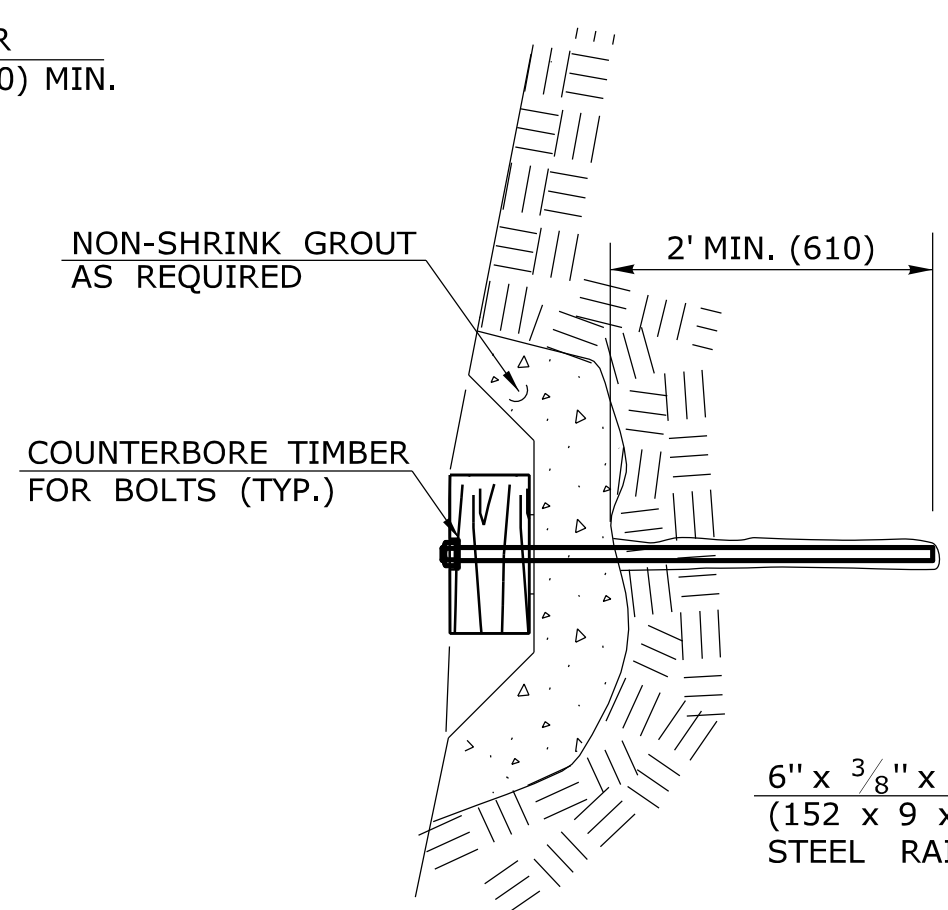
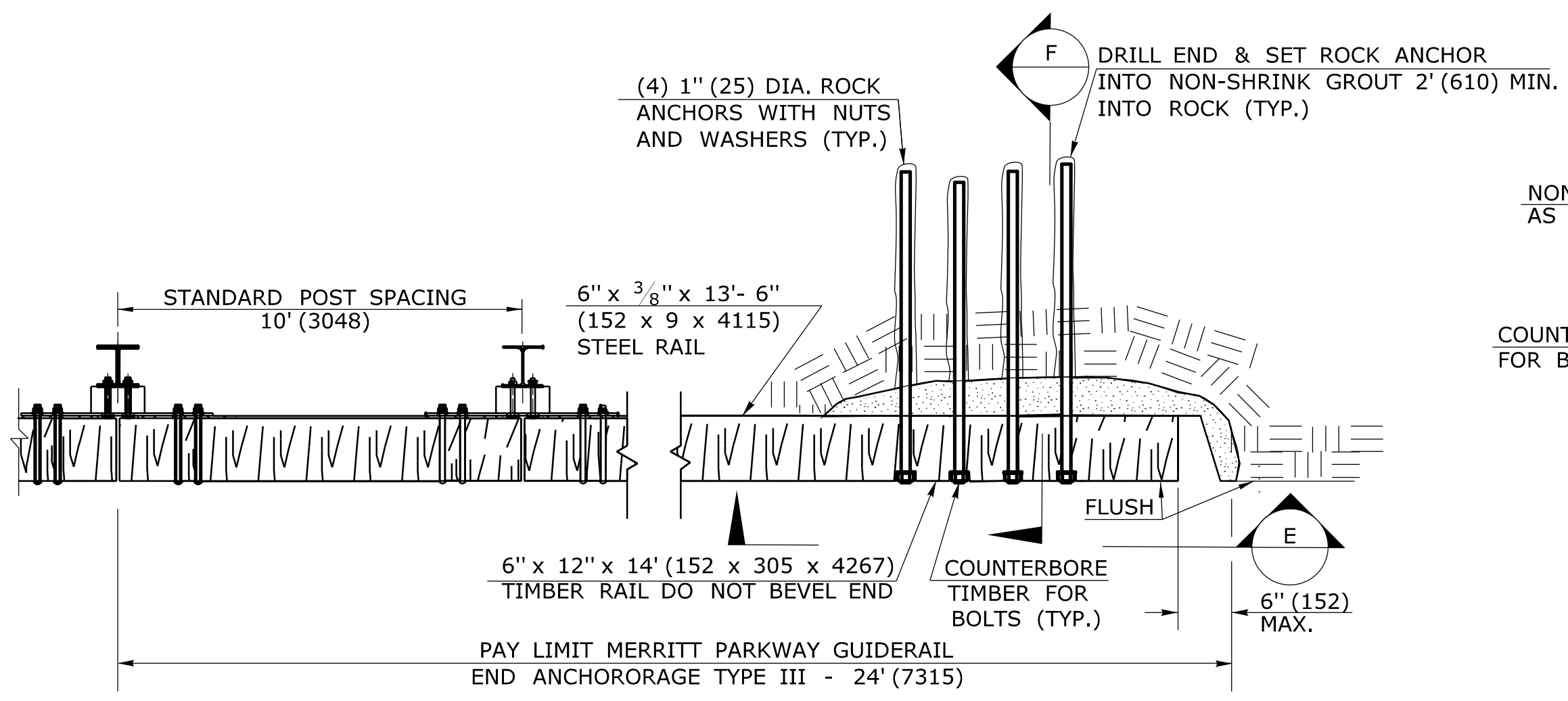


PLAN
ELEVATION
MERRITT PARKWAY GUIDERAIL END ANCHORAGE TYPE II (EARTH CUT SLOPE ANCHOR)

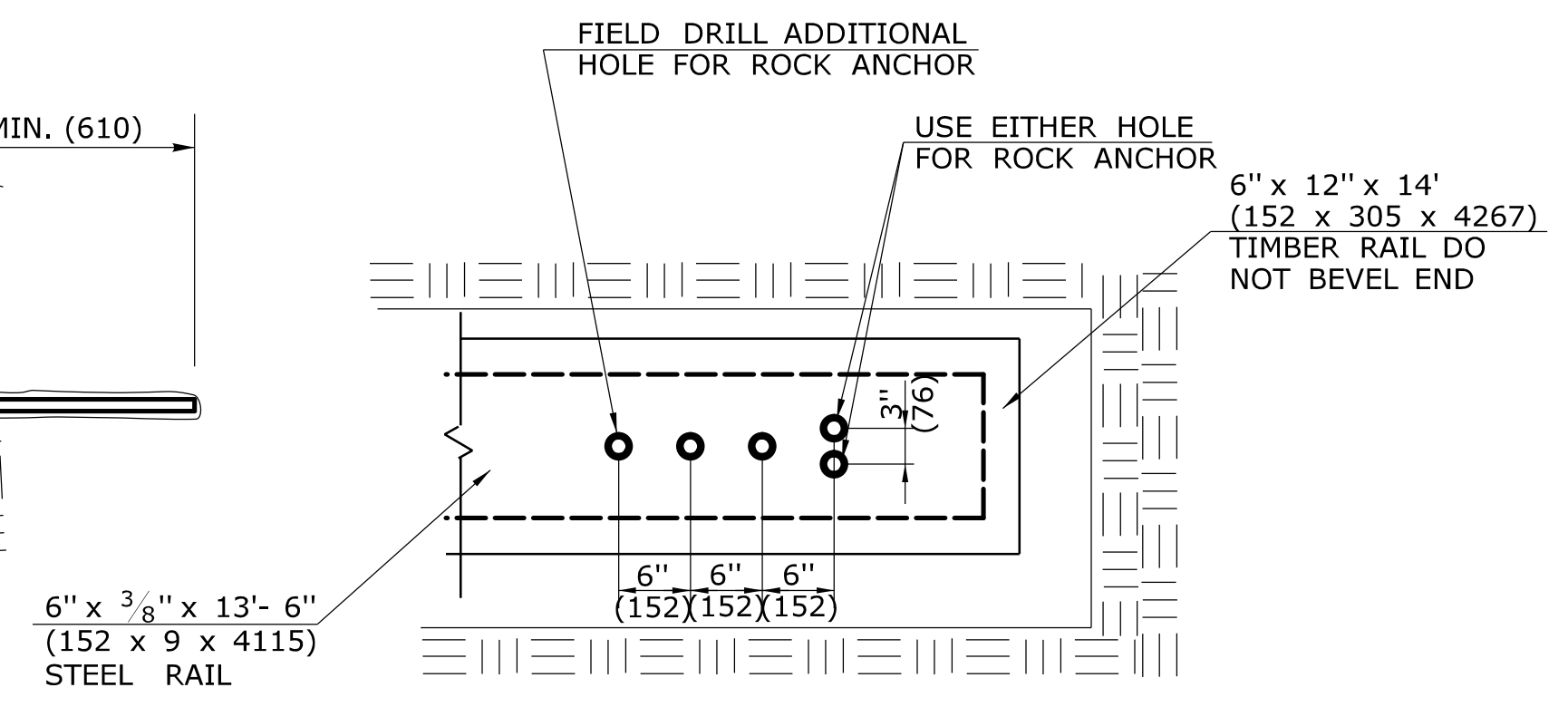
NOTE: SEE MISCELLANEOUS DETAILS FOR FLARE RATE a:b.



PLAN DETAIL D
PLAN VIEW FOR TYPE I & II ANCHOR



SECTION F



SECTION E

PLAN
MERRITT PARKWAY GUIDERAIL END ANCHORAGE TYPE III (ROCK CUT ANCHOR)

ALL METRIC DIMENSIONS ARE IN MILLIMETERS (mm) UNLESS OTHERWISE NOTED.

REV.	DATE	REVISION DESCRIPTION	Plotted Date: 9/30/2010	NOT TO SCALE	<p>STATE OF CONNECTICUT DEPARTMENT OF TRANSPORTATION</p>	SUBMITTED BY: NAME/DATE/TIME: APPROVED BY: NAME/DATE/TIME:	CTDOT STANDARD SHEET OFFICE OF ENGINEERING	STANDARD SHEET TITLE: MERRITT PARKWAY GUIDERAIL END ANCHORS	STANDARD SHEET NO.: HW-911_05
------	------	----------------------	-------------------------	--------------	---	---	--	--	---