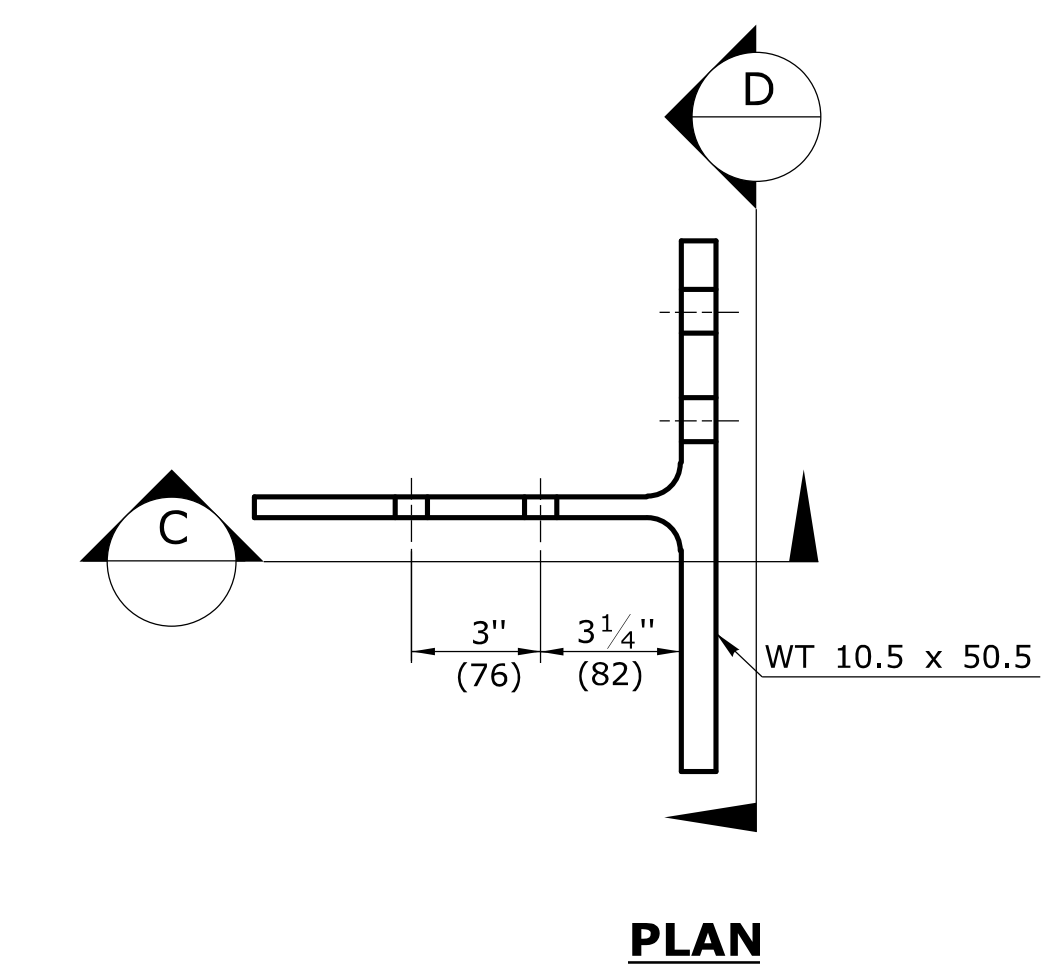
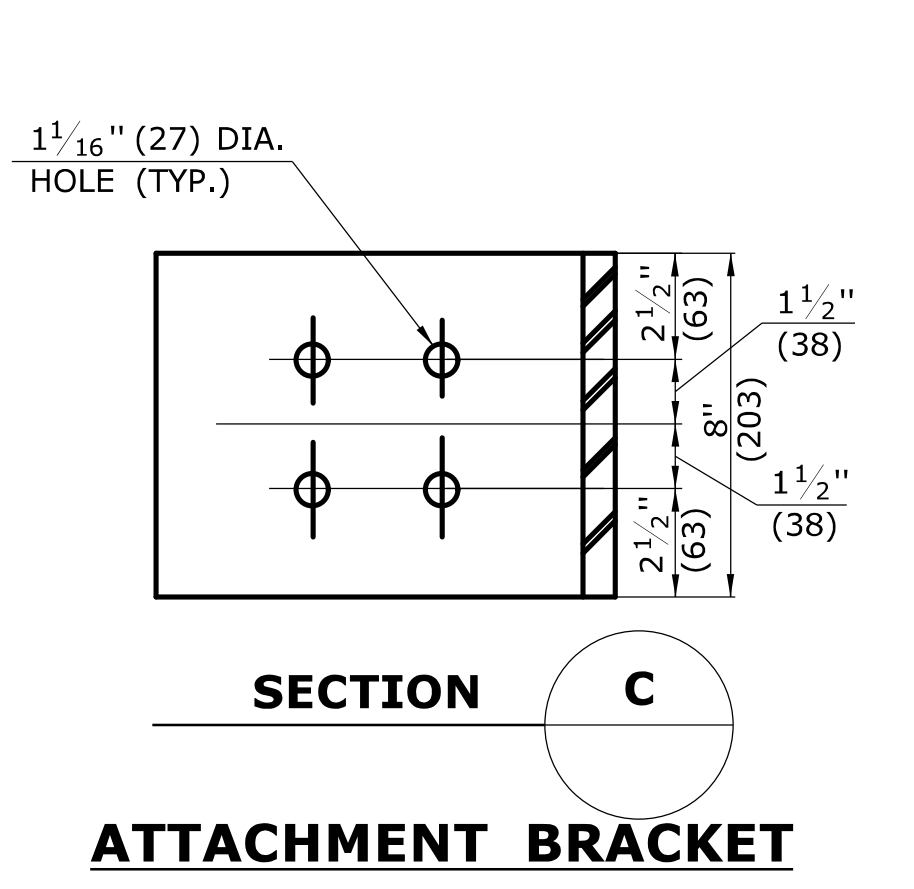
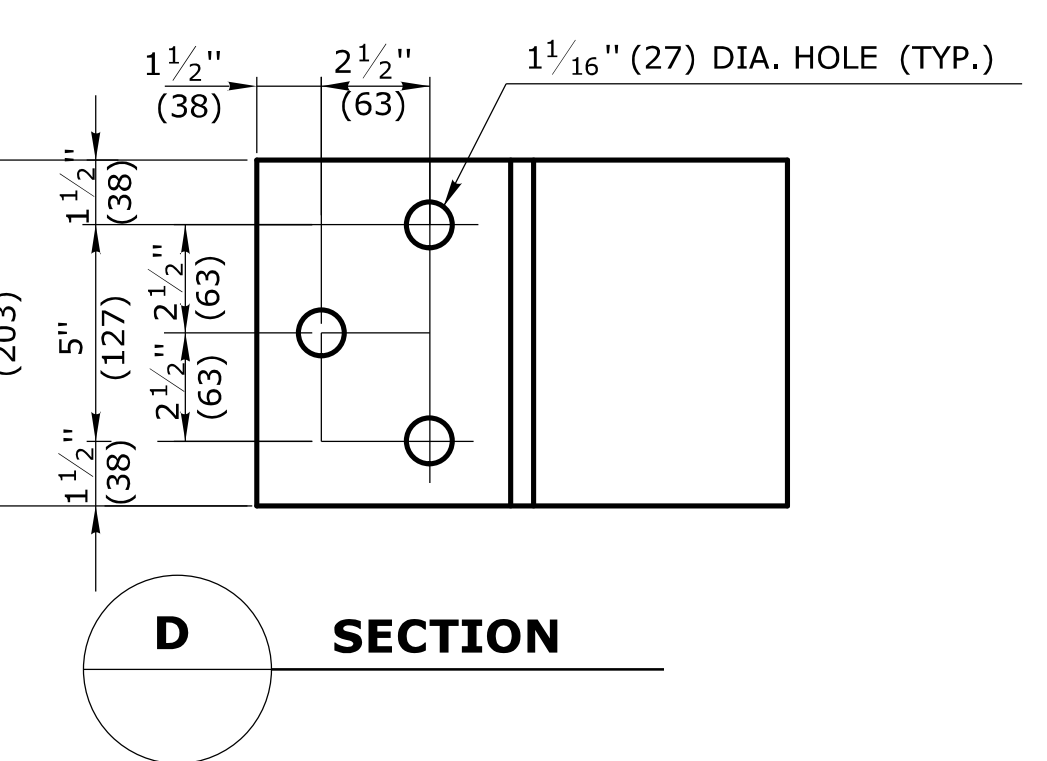
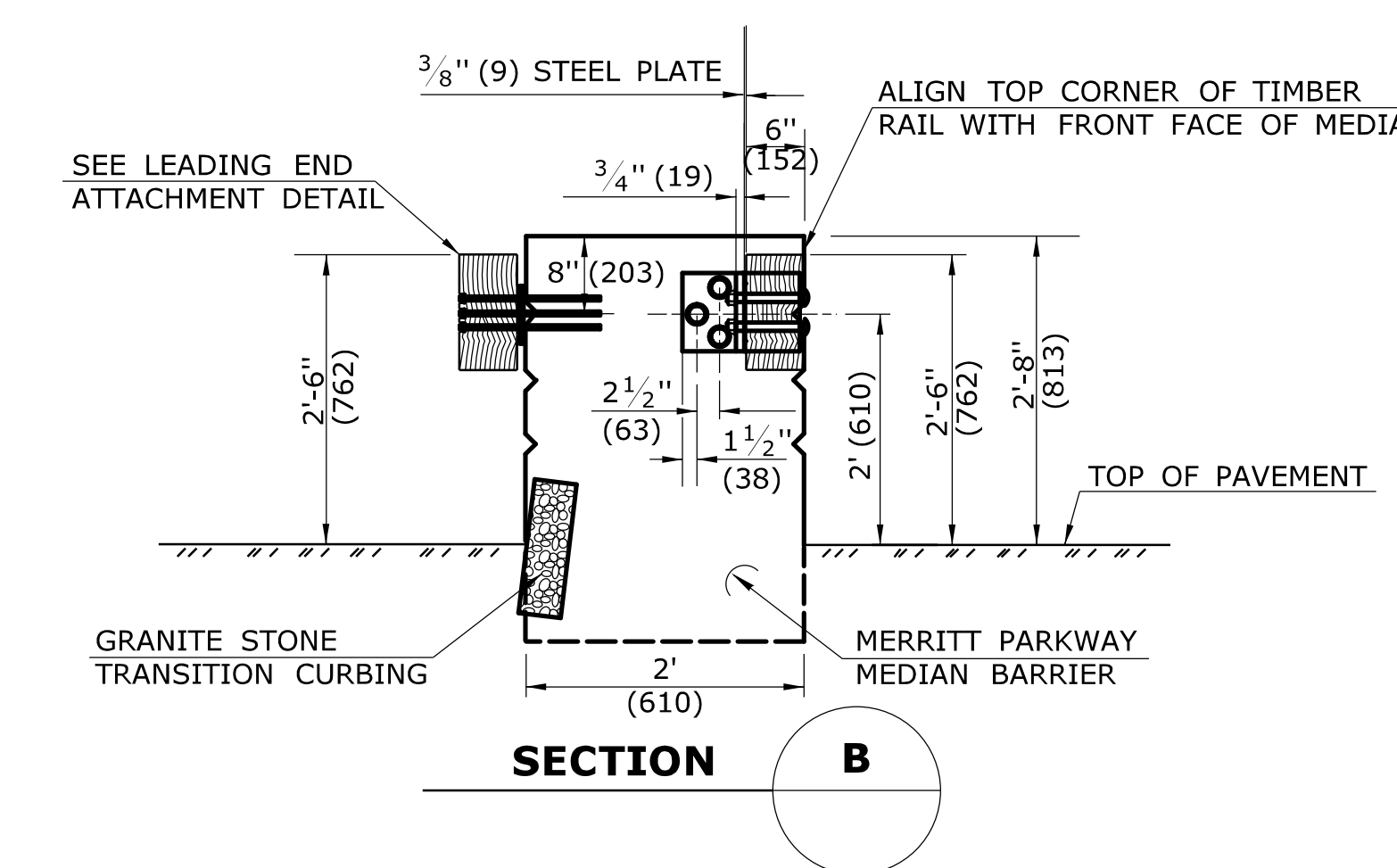
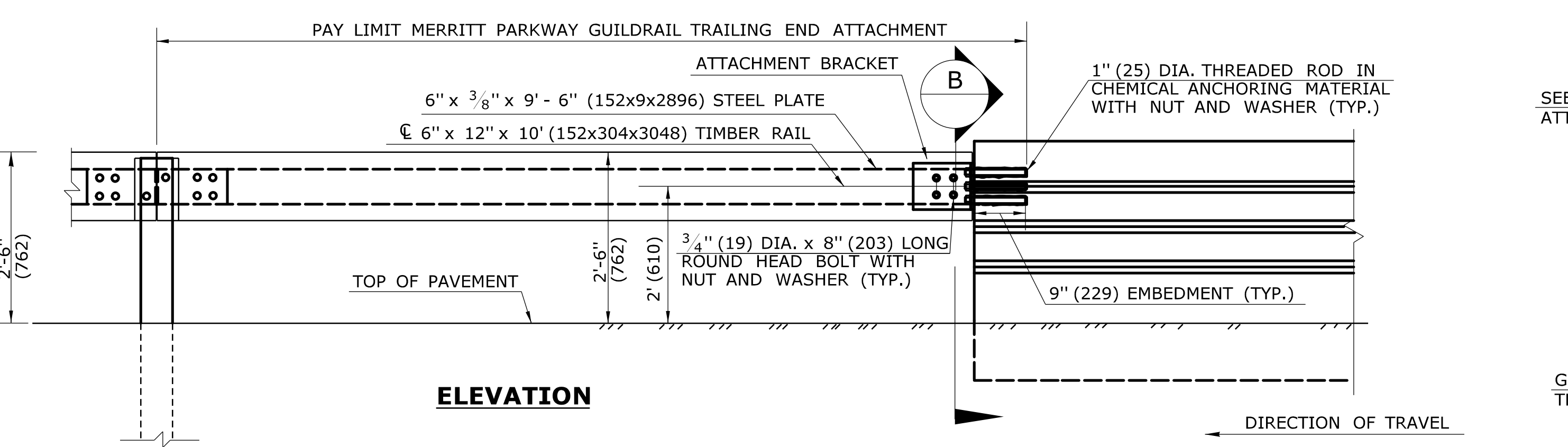
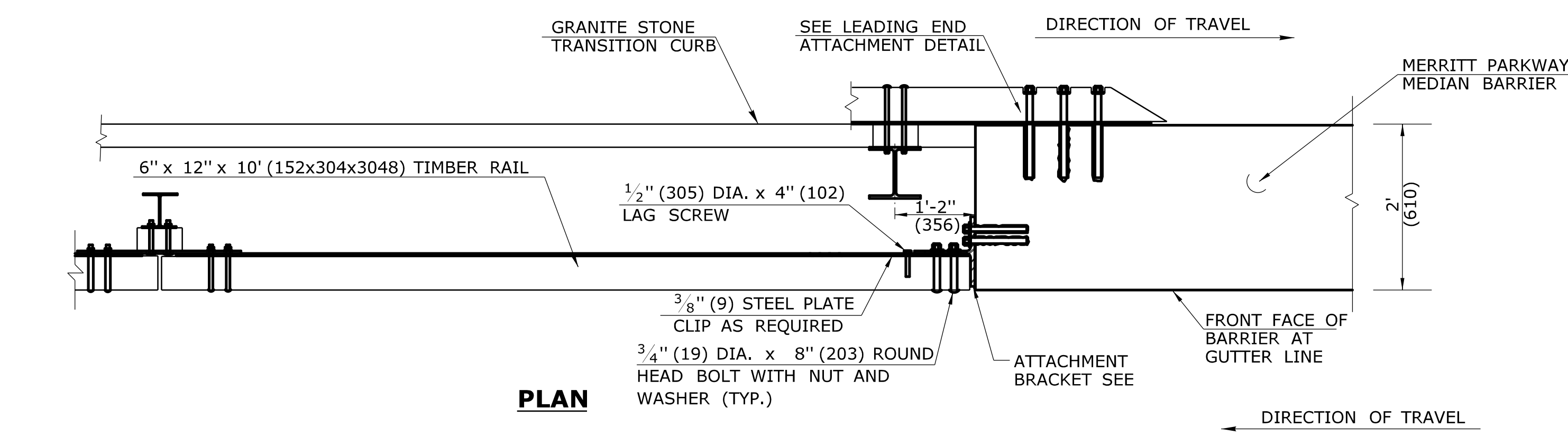


- GENERAL NOTES:**
1. THREADED RODS SHALL CONFORM TO THE REQUIREMENTS OF ASTM A325, WITH NUTS CONFORMING TO ASTM A563, GRADE C. CIRCULAR HARDENED WASHERS SHALL CONFORM TO ASTM F436. THREADED NUTS AND WASHERS IN CONTACT WITH CONCRETE SHALL BE GALVANIZED IN ACCORDANCE WITH ASTM A153. ROUND HEAD BOLTS SHALL CONFORM TO THE SPECIAL PROVISIONS PROVIDED WITH THE PROJECT.
  2. CHEMICAL ANCHORING MATERIAL SHALL CONFORM TO SECTION M.03, SUBARTICLE M.03.01-15
  3. ATTACHMENT BRACKETS SHALL CONFORM TO ASTM A36 AND BE GALVANIZED IN ACCORDANCE WITH ASTM A123.
  4. THE PAY LIMIT FOR TRAILING END ATTACHMENT INCLUDES ALL HARDWARE AND RAIL ELEMENTS TO AND INCLUDING THE FIRST POST.



**TRAILING END ATTACHMENT AT EXISTING BRIDGE PARAPET**



**TRAILING END ATTACHMENT AT MEDIAN BARRIER**

ALL METRIC DIMENSIONS ARE IN MILLIMETERS (mm) UNLESS OTHERWISE NOTED.

THE INFORMATION, INCLUDING ESTIMATED QUANTITIES OF WORK SHOWN ON THESE SHEETS IS BASED ON LIMITED INVESTIGATIONS BY THE STATE AND IS IN NO WAY WARRANTED TO INDICATE THE CONDITIONS OF ACTUAL QUANTITIES OF WORK WHICH WILL BE REQUIRED.		NOT TO SCALE	<p><b>STATE OF CONNECTICUT DEPARTMENT OF TRANSPORTATION</b></p>	SUBMITTED BY: _____ NAME/DATE/TIME: _____ APPROVED BY: _____ NAME/DATE/TIME: _____	<b>CTDOT STANDARD SHEET</b>  <b>OFFICE OF ENGINEERING</b>	STANDARD SHEET TITLE: <b>MERRITT PARKWAY GUIDERAIL TRAILING END ATTACHMENTS</b>	STANDARD SHEET NO.: <b>HW-910_12c</b>
REV. DATE REVISION DESCRIPTION	Plotted Date: 9/30/2010	Filename: CTDOT_HIGHWAY STD.dgn	Model: 49 - HW-910_12c				